



TOWN OF MILLS
EST. 1921

TRANSPORTATION PLAN

Town of Mills, WY



LOGANSIMPSON



TOWN OF MILLS

TRANSPORTATION PLAN

Prepared for:

Casper Area MPO
200 North David Street, Room 203
Casper WY, 82601
307-235-8255

Town of Mills
704 Fourth Street
Mills, WY 82604
307-234-6679 (p)

Prepared by:

Michael Baker International
165 S. Union Blvd, Suite 201
Lakewood, CO 80228
720-514-1100 (p)

Logan Simpson
123 North College Avenue, Suite 206
Fort Collins, Colorado 80524
970-449-4100 (p)

July 2017



EXECUTIVE SUMMARY

Why Plan?

Infrastructure is the backbone of a community but it requires planning to ensure that adequate infrastructure is provided to support the community. Mills has an advantage in that it is largely in the early stages of development with large expanses of land that have yet to be developed, which essentially provides a “blank slate” from which to develop their future roadway network, and an opportunity to establish the rules by which this network and new development should be implemented. This Plan guides the Town to ensure that existing and anticipated needs are met, transportation infrastructure is properly planned for, and funding can be identified prior to needs emerging.

Transportation Vision

The transportation vision is based on concepts of multi-modal transportation for all people, and a focus on safety and quality of life. Based on input received from the public and officials, the following is the Transportation Vision for Mills.

“Mills will have planned, multi-modal transportation infrastructure and policies to improve mobility, connectivity and access for all people. Adequate funding mechanisms will be sought to implement planned projects as needs emerge. The infrastructure will enhance the quality of life in the community, improve economic vitality, and promote improved safety.”

Key Policy Framework Concepts & Plan Highlights

This plan was created as a guide for the citizens and Government Officials of Mills, with their input and desire to improve the community. The planning process started with an evaluation of the existing barriers to transportation, travel patterns, and street and bike/pedestrian networks. Understanding the Transportation Vision for Mills, the plan outlines opportunities and strategies to achieve the desired transportation network, such as connectivity, functional classification, land use & urban form, block configuration, roadway spacing/block size, access management, mix of land uses and modes, and complete streets.

Residents identified areas within the transportation network that need improvement and this plan identifies recommendations to address those needs. In an effort to implement those recommendations and achieve the Town’s vision, identification of funding sources will be necessary.

Recommendations

This plan outlines recommendations to improve the transportation network. The following are project/action lists for short term and long term implementation of the plan.



Short Term Prioritized List of Projects/Actions

- Adopt an Active Transportation Plan
- Study opportunities to provide access across SW Wyoming Blvd to Town Hall area (underway)
- Evaluate opportunities for access to North Platte River in new Downtown area (underway)
- Expand regional pedestrian and bicycle network, including the WAPA (Western Area Power Administration) Powerline Trail
- Provide Recreational opportunities
- Provide connectivity of existing sidewalks/paths
- Prioritize sidewalk/path needs
- Adopt Complete Streets typical cross sections
- Modify the Town Code to require construction of wider sidewalks (underway)
- Adopt a Transit Plan
- Update the road maintenance plan

Long Term Prioritized List of Projects/Actions

- Chamberlain Road extension to the south, connecting to Energy Lane across the river
- Hudson Street extension from Yellowstone Highway north to 20/26 within the Town of Mills, potentially extending north to Howard Street extension in the future
- Six Mile Road extension through Mills, connecting to Trevett Lane to the south
- E/W roadway connecting West Belt Road with Chamberlain Road
- Village Drive extension to E/W roadway



Acknowledgements

TOWN STAFF

Mayor

Seth Coleman

Council Members

Sara McCarthy

Mike Pyatt

Darla Ives

Ronald Wales

Town Planner

Scott Radden

Assistant Town Planner

Kevin O'Hearn

Town Clerk

Christine Trumbell

PLANNING & ZONING COMMISSION

Chairwoman

Pattie Gould, Chair

Commission Members

Ed Greenwood

Bob Greenley

Velma Corson

Leon Norvell

MPO STAFF

Liz Becher

Pam Jones

Constance Lake

Mike Coleman, Public Works Director

THE COMMUNITY

A sincere thanks to all of the residents that provided their time and feedback to help Mills establish their vision!

CONSULTANT TEAM

MICHAEL BAKER INTERNATIONAL

Chuck Huffine, AICP, PE, PTOE

Jennifer Carpenter

Katie Schwarz

LOGAN SIMPSON

Bruce Meighen, AICP

Megan Moore, AICP

Kristina Kachur, AICP





Table of Contents

| | |
|---|-------------|
| CHAPTER 1: INTRODUCTION | PAGE |
| Overview..... | 1 |
| Scope and Purpose of Transportation Plan..... | 1 |
| CHAPTER 2: EXISTING CONDITIONS | |
| Overview..... | 1 |
| Review of Existing Plans..... | 2 |
| Existing Land Use & Zoning..... | 3 |
| Transportation Network..... | 4 |
| CHAPTER 3: FUTURE VISION | |
| Future Land Use Plan..... | 9 |
| Future Traffic Forecasts and Operations..... | 9 |
| Citizens Perspective..... | 11 |
| Opportunities..... | 13 |
| Recommendations..... | 18 |
| Major Street Plan..... | 19 |
| CHAPTER 4: MOVING FORWARD | |
| Implementation..... | 21 |
| Strategies..... | 22 |

Figures

| | |
|--|-------------|
| | PAGE |
| Figure 1: Existing Town Boundary and Road Network..... | 2 |
| Figure 2: Existing Zoning..... | 3 |
| Figure 3: Existing Levels of Service..... | 5 |
| Figure 4: River Front Conceptual Plan..... | 6 |
| Figure 5: Existing Bus Service..... | 7 |
| Figure 6: Future Levels of Service..... | 9 |
| Figure 7: Major Streets Plan..... | 20 |

Appendices

- A. Public Input

CHAPTER 1: INTRODUCTION

Overview



According to the American Community Survey, 3,597 people resided in Mills in 2015, an increase of 28% since the year 2000 (the US Census stated 2,591 people resided in Mills in 2000). This amount of growth has a significant impact on government resources, and the local water, sewer, and transportation infrastructure. While the town is small, the resulting benefit is that there remain large portions of vacant land that can be

planned to accommodate and guide the next influx of development before it occurs.

Scope and Purpose of Transportation Plan

The purpose of this Plan is to evaluate the existing transportation network and provide recommendations for improvement. Many of the recommendations outlined in this plan come directly from the residents it serves, while others are based on best practices and industry standards.

CHAPTER 2: EXISTING CONDITIONS

Overview

A review of existing conditions gives us a basis from which to start planning for the future. This section evaluates the existing land uses, existing plans/ordinances, and the existing transportation network. The review was based on existing data and studies, a field tour of the town, and input gained from MPO staff, elected officials, and the public. Figure 1 presents a map of the Town of Mills with roadways.

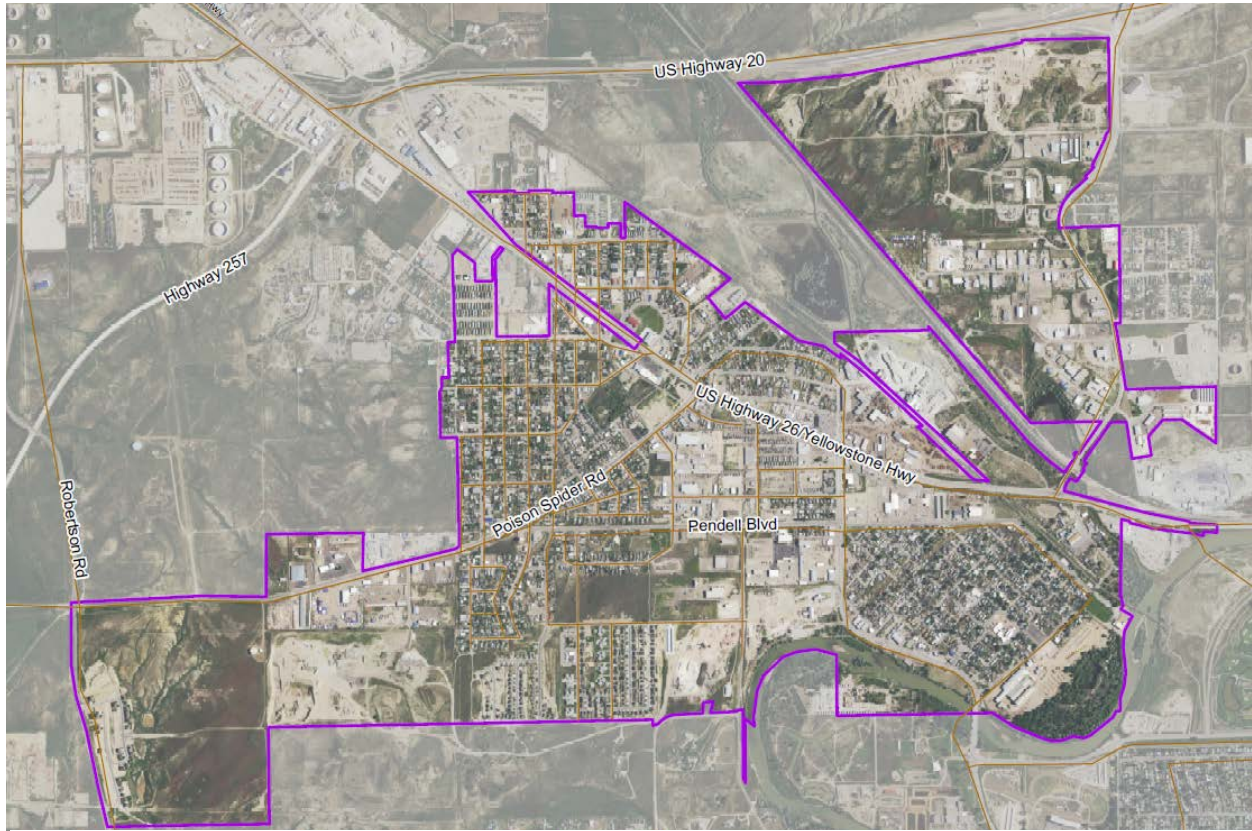


Figure 1 - Existing Town Boundary and Road Network

Review of Existing Plans

Long Range Transportation Plan

The 2040 Casper Area LRTP included an evaluation of transportation in the Town of Mills. The Plan considered all modes and evaluated level of service based on the existing and future land use plans. The results of that evaluation led to a list of recommended new roadways within the Town of Mills. These recommendations have been incorporated within this Plan.

1994 Community Development Plan

This Plan gives an overview of the land use, housing, and transportation situation in 1994. At the time, the “primary transportation corridor that need[ed] to be preserved is the west extension of 13th Street to Robertson Road, with a new roadway from that extension south to Paradise Valley”. However, they recognized that right-of-way would have to be acquired from the County in a portion of the NW corner of the fairgrounds. An alternative route was identified as the extension of Wyoming Blvd west to Beryl Street.

Existing Land Use & Zoning

The existing zoning classification for Mills includes a mix of industrial, residential, and general business. According to the 2012 Survey of Business Owners, existing land uses include 411 companies, while the American Community Survey estimated that Mills has 1,692 houses. This is a ratio of approximately 4 homes to every business. Figure 2 illustrates the existing zoning.

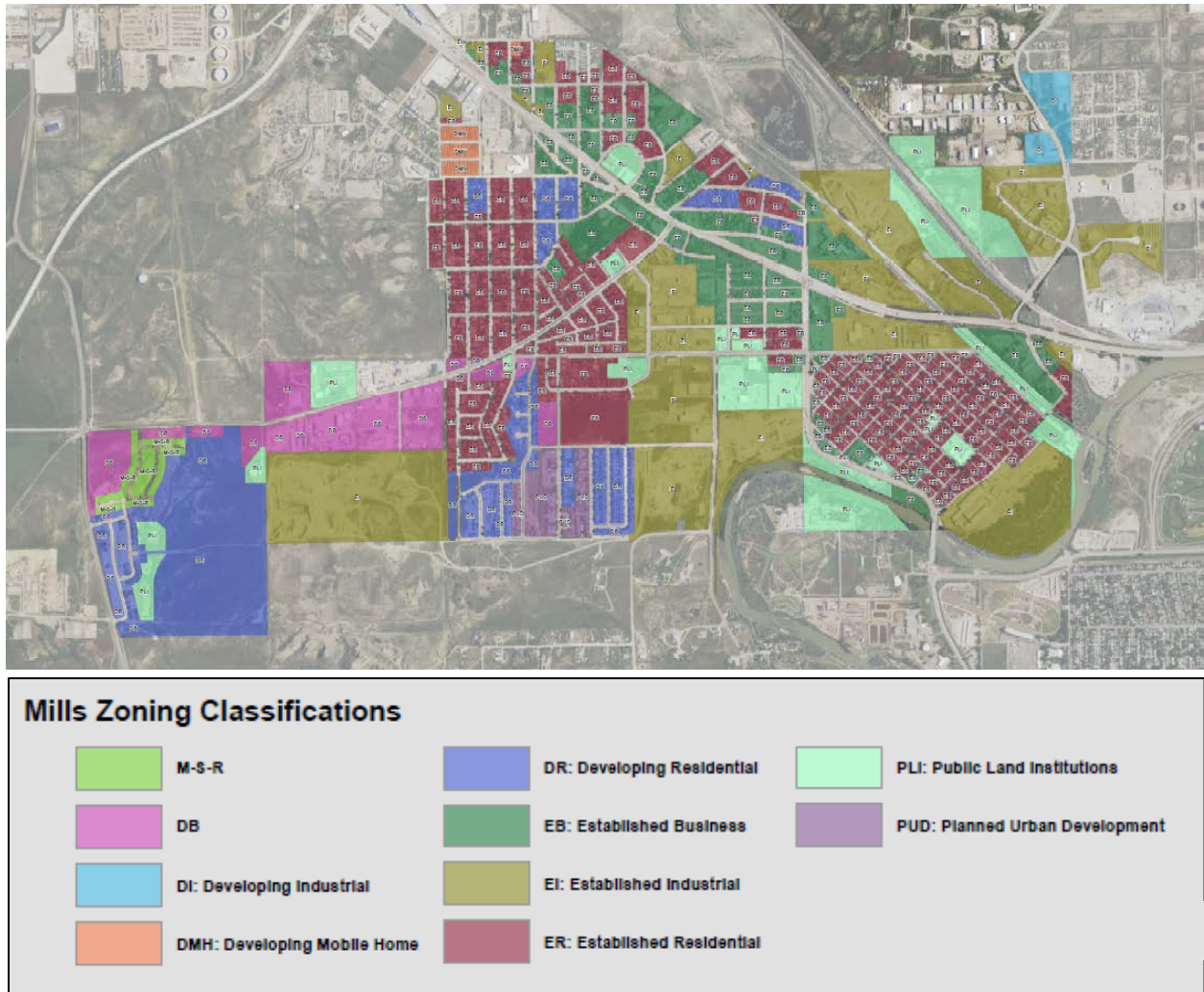


Figure 2 - Existing Zoning



Transportation Network

Barriers

The largest barrier and biggest impact to the transportation network in Mills is the lack of available regulations outlining standards by which the transportation network should be developed.

Travel Patterns

Since Yellowstone Highway and SW Wyoming Blvd to 13th Street function as the main regional roads leading to and from Casper (the primary travel destination), most traffic uses Yellowstone Highway or SW Wyoming Blvd to enter/exit Mills. The only other major road that connects Mills to adjacent development is Robertson Road. In order to distribute traffic and reduce potential congestion points as the Town grows, additional routes to the north, south and east should be considered. Specifically, SW Wyoming Blvd to the north, the extension of 13th Street to the west, over the river should be evaluated, as well as the extension of Chamberlain Road to the south.

Streets

The roadway network in Mills was built in a gridlike fashion, though in some places, the grid is at an angle, or the major road cuts through at an angle to the existing development, resulting in some intersections with skewed angles that create safety concerns. At present, population is not producing sufficient peak hour traffic volumes to result in unacceptable levels of service.

Cross street signage, road repair, and refuge islands for pedestrians were voiced as concerns by citizens.

Figure 3 presents the existing levels of service (volume/capacity ratios) for the streets in and around Mills. All roads currently operate at Level Of Service (LOS) A, which means traffic flows at or above the posted speed limit and all motorists have complete mobility between lanes.

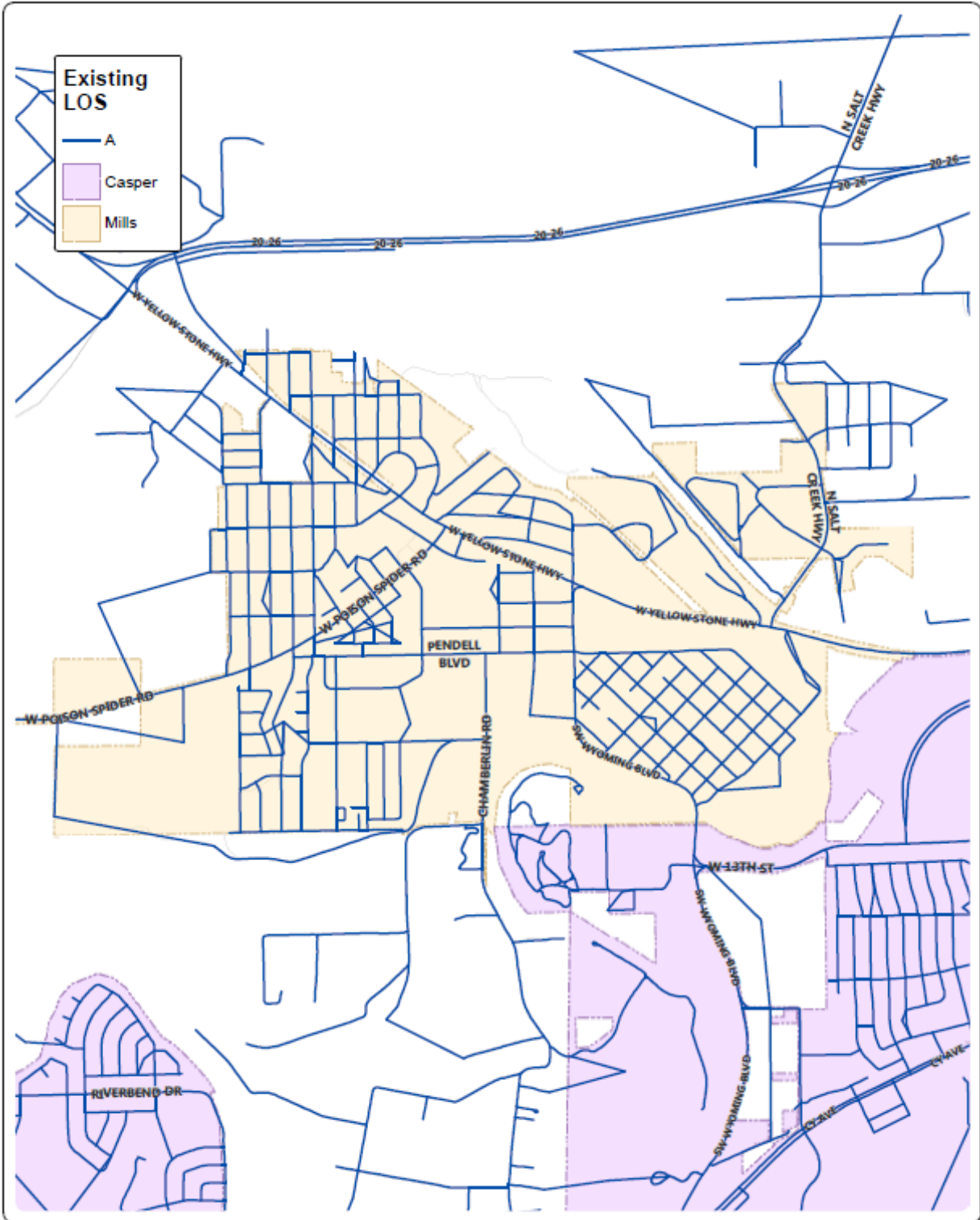


Figure 3 - Existing Levels of Service

Bike & Pedestrian

Residents of Mills feel that biking and walking are important, as evidenced in the percentage of people that bike/walk within the community. The Mills survey asked what modes people use to get around town. Based on the survey, 30.6% of residents use both a car and a bike to get around their community, while 41.7% use both a car and walk. It is important that the Town focus on ways to improve/expand the existing sidewalk and path network to embrace this healthy alternative. The need for continuous and wider sidewalks, access to the North Platte River, and an expanded trail network were voiced as concerns.

The town is currently working on a concept plan for the River Front property that includes many components the residents have asked for, including a trailhead, boardwalks, river overlooks and potential pedestrian crossings with refuge islands over SW Wyoming Boulevard. Additionally, the Plan includes destinations such as an amphitheater, outdoor game room, and beach access that will draw residents to the area. The concept plan is shown in Figure 4 below.

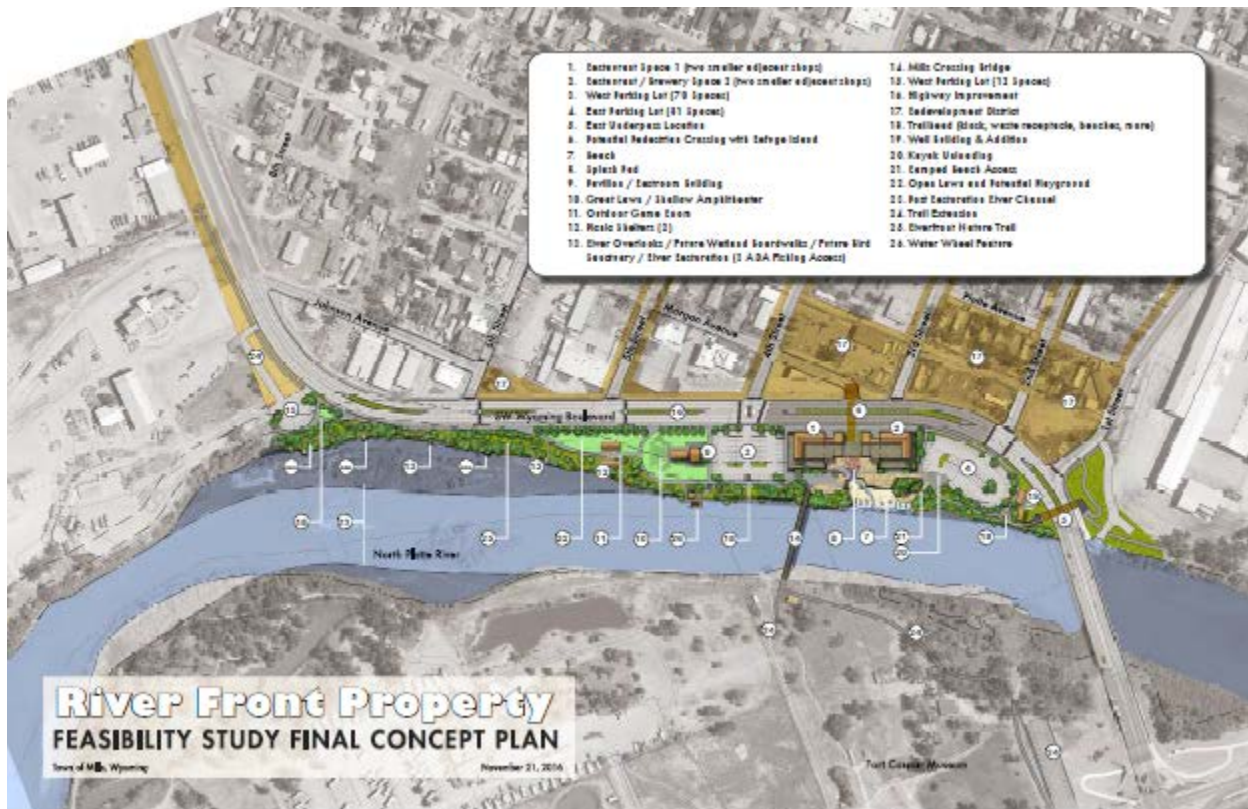
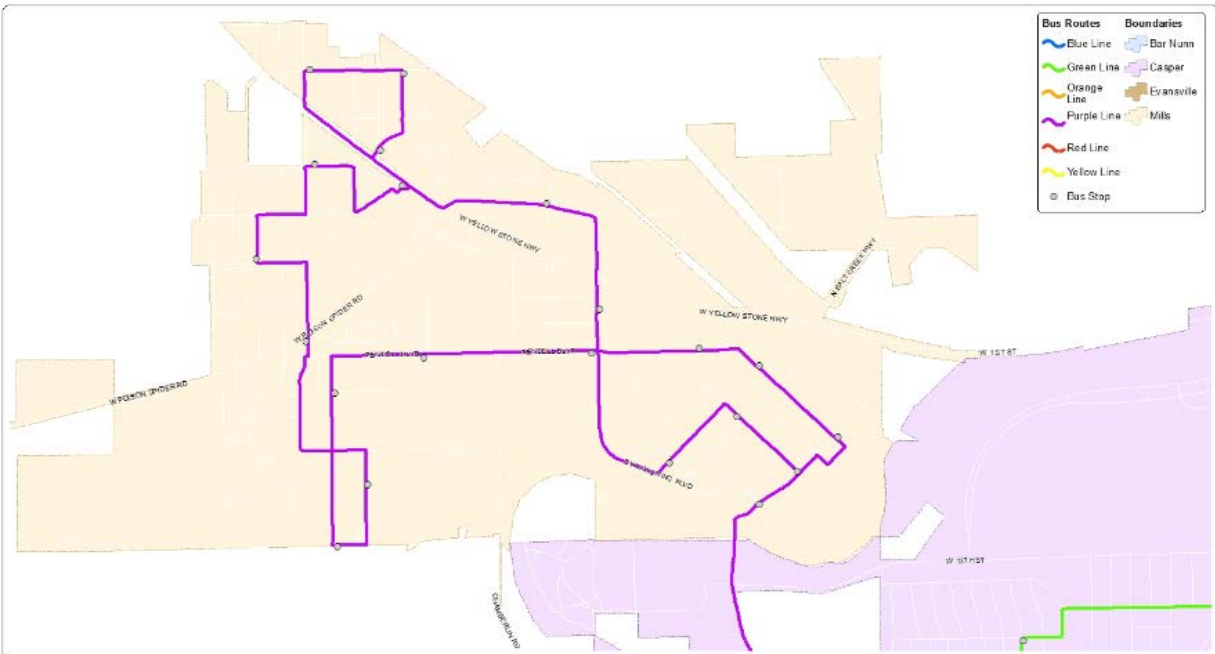


Figure 4 - River Front Conceptual Plan

Transit

Mills is currently served by The Bus every day except for Saturday and Sunday. Based on a survey of residents in 2016, 47% of residents stated that they were familiar with The Bus and the available services, 32% know about the bus, but don't know specific details about the route or services, while approximately 20% either are not familiar or didn't know Mills is serviced by The Bus. When asked what residents thought was the main transportation issue, many stated the need for evening and/or weekend bus service and shorter routes to get to their destination. With approximately 18.5% of the Town population in poverty (which means a family of four makes less than \$24,250 annually, per the 2015 US Census), it is very important to continue and/or expand bus service in Mills.

Figure 5 - Existing Bus Service





Existing Needs

In July of 2016 the town held a BBQ with bounce houses, face painting, shaved ice, and a Touch-A-Truck that was attended by over 350 people. Following that event, on October 27, 2016 a Mills Land Use & Transportation workshop was held. These two events helped to engage residents, community officials and MPO staff about existing transportation needs. Based on discussions, surveys, and in-person interviews during these events, the following list provides an overview of the finalized existing needs:

- ✓ Pedestrian/bicycle access to the North Platte River
- ✓ Continuous and wider sidewalks
- ✓ Expanded trail network
- ✓ Additional and improved bus stops
- ✓ Expanded bus routes, plus service days and hours
- ✓ Cross street signage
- ✓ Sidewalk and road repair
- ✓ Refuge island for wide roads (4th Street is a great example for this)
- ✓ Tying pedestrian and bicycling access to Town Hall
- ✓ Creating a footbridge (or undercrossing) crossing Wyoming Blvd in the vicinity of the planned river development across from Town Hall
- ✓ Innovative lighting (LED); especially near Town Hall
- ✓ Bus Stop/Paratransit for new Senior Center development
- ✓ Boat launch for river access
- ✓ Continuation of Mills Riverfront Conceptual Plan

CHAPTER 3: FUTURE VISION

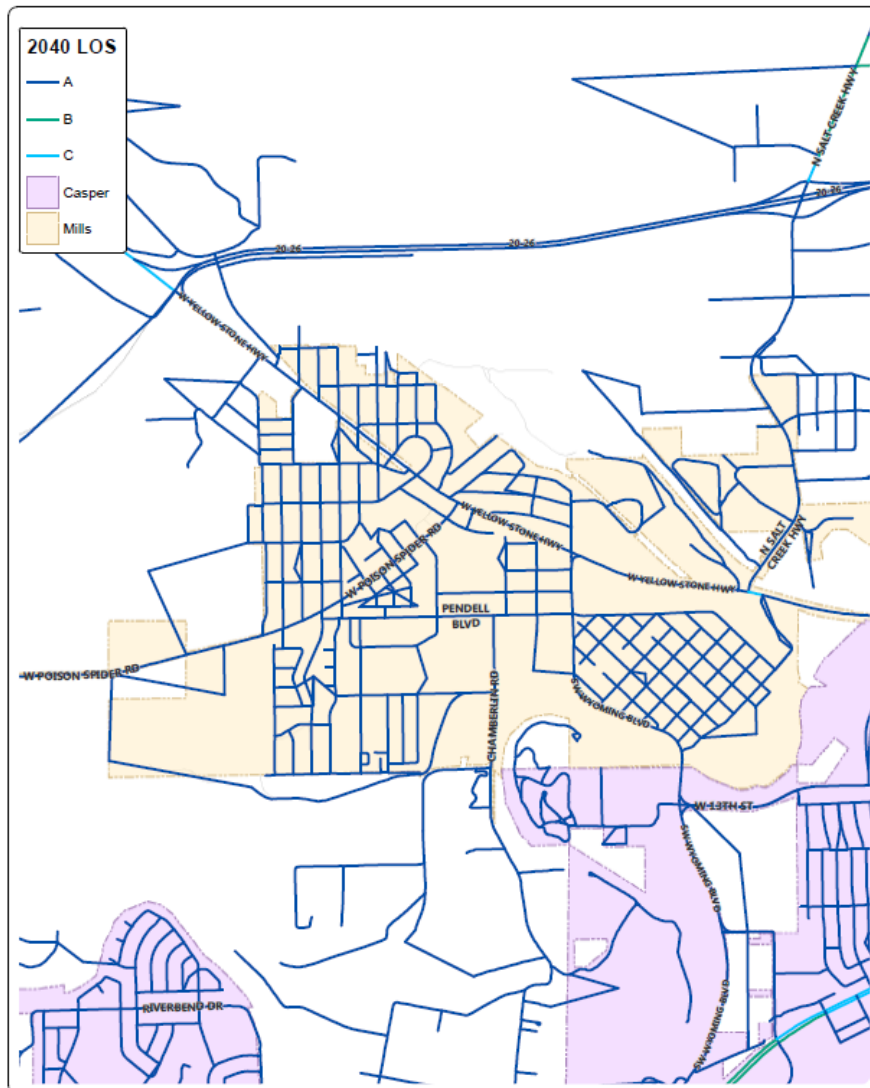
Future Land Use Plan

MPO staff examined future land use assumptions contained in the Casper Area Travel Demand Model and updated expected employment and households as appropriate.

Future Traffic Forecasts and Operations

The future land use concept plan was input into the Casper Regional Travel Demand Model to forecast travel in the year 2040. Figure 6 presents the forecast levels of service with the planned growth and transportation changes. Mills is still not anticipated to experience any significant traffic congestion.










Figure 6 - Future Level of Service














Level of service is a measure by which transportation professionals measure congestion levels on roadways and at intersections. Most cities and towns strive to achieve nothing worse than an LOS C or D. Nearly all roads in Mills are anticipated to operate at LOS A in future years.

Roadway

| | |
|--|---|
| <p>A Free flow, low traffic density</p>  |  |
| <p>B Minimum delay, stable traffic flow</p> |  |
| <p>C Stable condition, movements somewhat restricted due to higher volumes, but not objectionable for motorists</p>  |  |
| <p>D Movements more restricted, travel speeds begin to decline</p> |  |
| <p>E Traffic fills capacity of the roadway, vehicles are closely spaced, incidents can cause serious breakdown</p>  |  |
| <p>F Forced flow with demand volumes greater than capacity resulting in breakdown in traffic flow</p> |  |

Intersection

| | |
|--|---|
| <p>A Minimal delays</p>  |  |
| <p>B Low levels of delay and queuing</p> |  |
| <p>C Intermittently vehicles wait through more than one signal indication, occasionally backups may develop, traffic flow still stable and acceptable.</p>  |  |
| <p>D Delays at intersections may become extensive, but enough cycles with lower demand occur to permit periodic clearance, preventing excessive backups. LOS D has historically been regarded as a desirable design objective in urban areas.</p> |  |
| <p>E Traffic fills intersection capacity, long queues and delays, many vehicles need to wait through more than one green indication</p>  |  |
| <p>F Traffic demand exceeds capacity of intersection, very long queues and delays, most vehicles need to wait through more than one green indication</p> |  |



Citizens Perspective

The citizens of Mills had opportunities to provide input to this plan. The first was given via a survey provided in July 2016 at a BBQ with bouncy houses, face painting, shaved ice and a Touch-A-Truck that was attended by over 350 people, and the second was during a Community meeting held on October 27th, 2016. During this meeting, citizens and MPO staff discussed existing needs in Mills, future goals and objectives, and ordinances/regulations.



Survey Results

Logan Simpson issued a survey to gather feedback from residents on what they like best about Mills. Residents expressed an appreciation for the size of the Town, proximity to the river and the airport, as well as the quiet nature and feeling of safety they have living in Mills. When asked what needed improving, they stated the roads and sidewalks, more activities for kids, entertainment for kids and adults, and commercial opportunities such as a grocery store, restaurants and recreation. Nearly 75% of residents rated their overall community as a 7 or above, and nearly 60% rated the transportation and roads as a 7 or above on a scale of 1 to 10.

Goals & Objectives

During the Community Workshop held on October 27, 2016, residents and staff discussed the goals for the Town and rated each of the following objectives based on their perceived importance. The objectives they rated as highly important are shown in **red**, those with medium importance are shown in **brown**, and those identified as being less important are shown in **orange**.

Goal 1: Improve Mobility, Connectivity and Access for All People

Objectives

- Improve connectivity across multiple modes including vehicular, transit, bicycle, and pedestrian
- Institute regular consideration of pedestrian network connectivity in the review of development proposals and regulations
- Support the creation of pedestrian-oriented businesses that can be walked to by public transportation users
- Promote equitable service for all people
- Expand use of local public transportation service to those areas in need
- Improve the current standard of paratransit and elderly transportation
- Create a more comfortable, less intimidating pedestrian environment
- Seek opportunities to expand mobility options that are compatible with surrounding land uses
- Explore using innovation and technology



- Identify opportunities for establishing multimodal nodes in the region
- Provide safe and convenient facilities to establish cycling as a viable, safe and healthy alternative transportation option
- Create and implement context-sensitive design standards
- Address highly congested areas
- Increase the use of alternative transportation modes such as vanpooling, carpooling and ridesharing

Goal 2: Enhance Quality of Life

Objectives

- Improve the safety of all users of the system for all modes of travel
- Maintain the cleanliness and good repair of transportation infrastructure
- Use transportation infrastructure to help create attractive communities
- New projects should respect the character and plans of the Town of Mills, and adjacent neighborhoods and communities
- Security of the transportation system must be integrated into planning process
- Prioritize environmentally sustainable projects using a sensible, balanced approach

Goal 3: Improve Economic Vitality

Objectives

- Improve access to jobs for both residents and employers
- Improve access to education for all students within the County
- Allow for balanced and equitable growth
- Consider impacts on and opportunities for economic development in plans and projects
- Maintain and enhance real estate values across the County
- Strengthen the connection between transportation and land use
- Provide for the efficient movement of goods by both rail and truck

Goal 4: Implementation

Objectives

- Adequately maintain the existing transportation network
- Select new projects that can be efficiently funded and maintained
- Prioritize projects into multiple tiers by recognizing the limited funding currently available and preparing for possible additional sources
- Identify new sources of funding to grow local transportation dollars
- Support a renewed trust in elected leaders and public confidence in the process through transparency, open communication, and collaboration across agencies
- Encourage strong community engagement in the planning process and in the town's future growth and development

Goal 5: Promote Improved Safety

Objectives

- Emphasize safety in all elements of transportation planning and incorporate the consideration of the context in which a project is proposed for safety enhancements for all funding programs
- Address safety and efficiency issues at intersections
- Optimize safety for all public transportation users



Opportunities

Residents were key in pointing out the opportunities and challenges to transportation in Mills. The following points out some of the opportunities that are available to improve transportation and quality of life.

Connectivity

As population continues to grow in Mills, with a high percentage of residents traveling to adjacent communities to go to work, it becomes increasingly important that roadway, pedestrian, and bicycle connections between these communities be provided. The adjacent communities are currently updating their Major Streets Plans to address future growth and congestion which provides an opportunity for Mills to connect with and expand on those proposed systems.

Functional Class

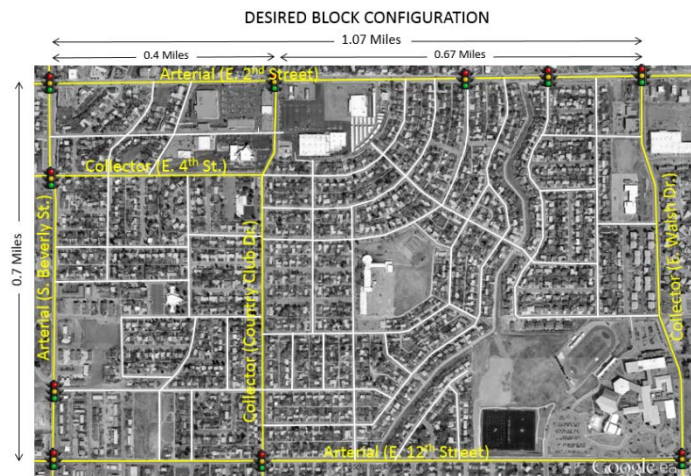
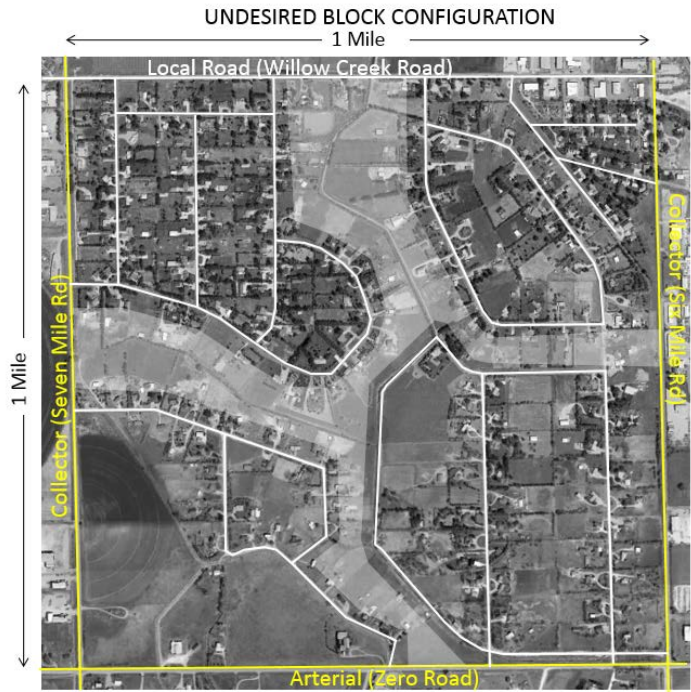
The functional classification of a roadway describes its primary purpose, such as moving traffic efficiently, providing local or regional connections, or providing land parcel access. Functional classification is based on traffic volumes, vehicle speeds, length of typical trips, road geometry, spacing between similar roads, and state/regional significance. Each functional classification has a corresponding set of design criteria, such as access spacing, design speed, and typical cross sections. Within the existing boundary of Mills and the proposed expansion area, there is one Highway (West Belt Loop), a few arterial roads (Yellowstone Highway, SW Wyoming Blvd and Zero Road), and a few collector roads (Poison Spider Road, Chamberlain Road, Pendell Blvd, and Seven Mile Road). As development increases, it is important to expand on the arterial and collector road system to provide alternative travel paths. Planning for these roads now provides an opportunity to preserve the needed right-of-way before development occurs.

Land Use & Urban Form

Land use has five main characteristics: development density, mix of uses, urban form, urban design, and contiguousness of development (where developments are adjacent to each other and possibly connected). All of these characteristics have some level of impact on the number or length of trips on the arterial and collector roadway network. Density is the amount of development within a specific area. Higher levels of density are typically associated with availability of transit and a mix of uses. A mix of uses can enable more activities to be served by shorter or non-motorized trips. Urban form is established through a pattern of land development and sets the basis for the transportation infrastructure. Urban design offers an opportunity to make property more accessible for alternative modes, while providing aesthetic benefits. Contiguous development can increase density in an area and reduce travel. Each of these components is critical to integrating land use patterns and transportation facilities as the strategic framework of the community.

Block Configuration

Block development, layout and connectivity can significantly impact motorized and non-motorized traffic movement. When development within an area is comprised of multiple commercial or residential developments that do not interconnect, traffic from one side of the area must use the collector and arterial roads to access development on the opposite side of the area. Doing so increases traffic and congestion on the adjacent collector and arterial roads, thereby negatively impacting regional traffic and making them less safe. As traffic and congestion increase, roads are widened, creating barriers between blocks and neighborhoods, and longer distances for bicyclists and pedestrians to cross. This lack of interconnectivity also forces pedestrians and bicyclists to travel on, or adjacent to, high speed, high volume arterial and collector roadways, which often makes them feel less safe.



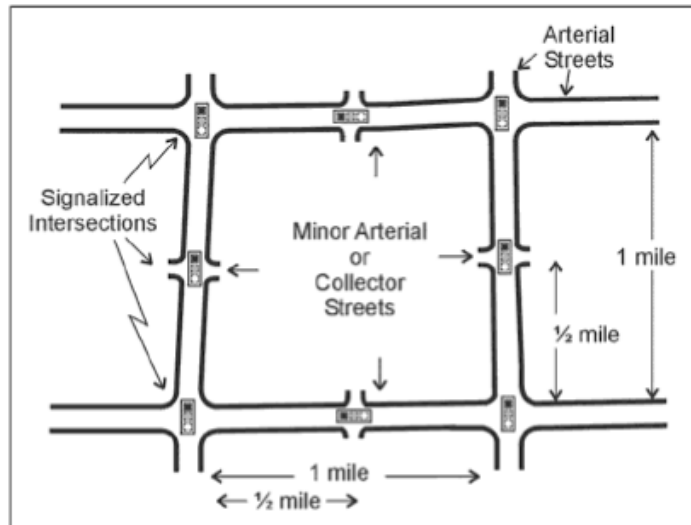
Conversely, providing a grid of interconnected local streets within a block, allows alternative ways for both vehicles and pedestrians to access nearby development within the block. Since this traffic does not have to use the arterial or collector streets, traffic volumes are lower, allowing narrower roads and shorter pedestrian and bicyclist crossing distances.

Roadway Spacing/Block Size

Implementing appropriate roadway spacing (the distance between parallel arterial roads) is important to avoid having closely-spaced intersections, which increases delay and congestion. Conversely, having arterial roads too far apart can force too much traffic to use collector and local roads. One-mile spacing is the accepted standard for urban arterial roadways with a supporting system of collector and local roadways.

Advantages of this spacing and block size include:

- Local bus service on arterial and collector streets places residents within a reasonable (1/4 mile) walking distance of a bus line.
- Continuity of collector and local streets provides an alternative to arterials and serves shorter trips.



- A reasonable travel distance from a residence to a major street or arterial road reduces the vehicle-miles of travel (VMTs) on local streets and collectors, thereby improving the residential environment and reducing vehicle-pedestrian conflicts on local streets.
- Emergency response time may be improved, as less distance is traveled on local streets and smaller collector roads.
- It allows for 1/2 mile spacing of signalized intersections, which can provide more efficient traffic flow.
- It allows local streets to be designed with curves, traffic calming elements, etc. to actively discourage cut-through traffic, while supporting connectivity and continuity of movement for pedestrians and bicycles.

The existing collector and arterial roadway network in the developed areas of Mills provide a good basis from which to expand the grid. However, to distribute future traffic, the one-mile spaced grid should be extended.

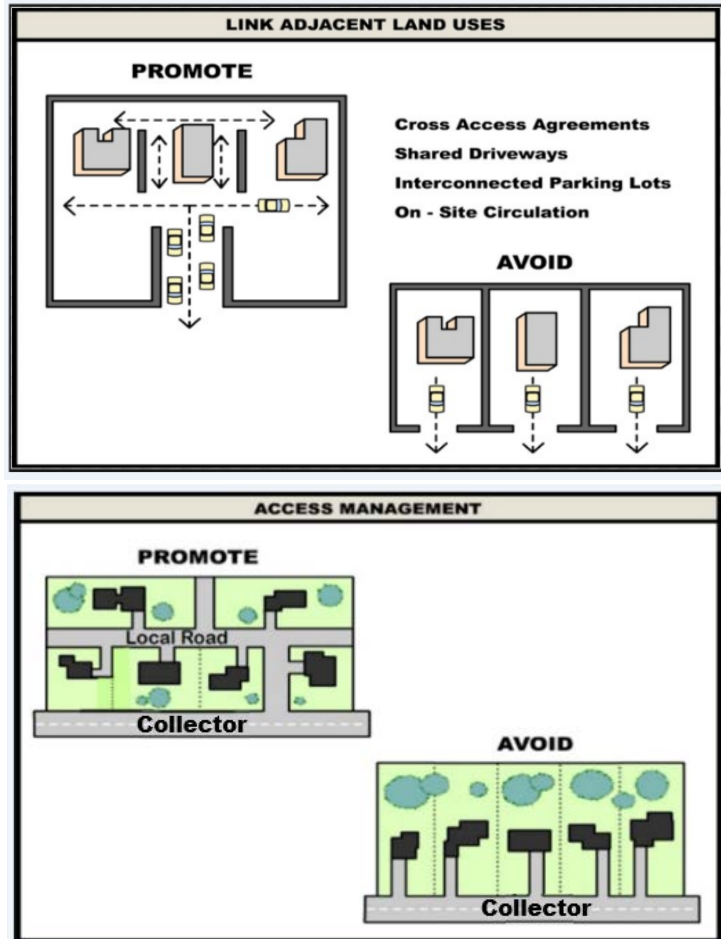
Access Management

A minimal number of adequately-spaced access points preserves the capacity of a roadway and provides smoother traffic flow on arterial and collector roads. Limiting the number of driveways can also reduce the number of traffic accidents. A good access management policy considers the following: intersection spacing, driveway spacing, cross access/interconnected parking lots, turn lanes, and medians.

To further improve the capacity of the existing roadways, cross access and interconnection policies, for both residential and commercial uses, need to be established as part of the site plan review process, and enforced. In these illustrations at right, providing access from every parcel to adjacent arterial or collector roads should be avoided. By requiring parcels to interconnect and have fewer, combined access points to arterial and collector roads, development would start to look like the “promote” illustrations. Support of these access management

policies allows for vehicles to stay within the site to access multiple uses, reducing vehicle trips and impacts on the adjacent roadway.

Similarly, medians restrict the number of turning locations on arterial and collector roadways, thereby limiting the number of conflict points, preserving the smooth flow of traffic, and improving safety. Medians can retain the flow of traffic, but are not ideal for smaller, lower speed roadways where access to individual parcels is a higher priority.



Mix of Uses

Modern zoning typically results in residential, commercial, and industrial uses not being located close to each other, which promotes the use of the automobile. This

DISCOURAGED LAND USE FORM



increases traffic and makes communities much less friendly for bicyclists and pedestrians. Zoning that promotes a mix of uses and interconnected development can create high quality, walkable communities that preserve roadway and intersection capacity while increasing opportunities for alternative modes like bicycles and transit.

The zoning and land use plans should consider

the mix of uses and promote the concept of locating neighborhood commercial and business land uses between the residential and industrial land uses.

ENCOURAGED LAND USE FORM



Complete Streets

Complete streets are designed and operated to enable safe access and travel for all users and modes. Consideration for complete streets should be evaluated on major roads such as Poison Spider Road, Chamberlain Road, and Pendell Blvd.



The use of alternative modes is important to residents of Mills, but the existing bike/pedestrian network is not representative of those desires. If not already in the Town Code/Ordinances, we recommend standards for the bike/pedestrian network, including when and where sidewalks and bike paths should be provided, minimum design standards and obstructions to avoid (i.e.

drainage grates and electric poles within the sidewalk/path), bike/pedestrian requirements for residential and non-residential development (i.e. sidewalk connectivity through the site, bike parking spaces, etc...), typical/minimum/maximum block sizes, and complete street cross sections that account for all modes.



Recommendations

The following is a list of recommendations for improvement of the transportation system to meet the identified needs and take advantage of the opportunities.

Adopt a Major Streets Plan

- Hudson Street extension from Yellowstone Highway north to 20/26 within the Town of Mills, potentially extending north to Howard Street extension in the future
- Six Mile Road extension through Mills, connecting to Trevett Lane to the south
- Chamberlain Road extension to the south, connecting to Energy Lane across the river
- E/W roadway connecting West Belt Road with Chamberlain Road
- Village Drive extension to E/W roadway
- Consider 1 mile spaced Major Roads

Improve multi-modal access in Mills

- Adopt an Active Transportation Plan
 - Access across SW Wyoming Blvd to Town Hall area (underway)
 - Access to North Platte River in new Downtown area (underway)
 - Expand regional pedestrian and bicycle network
 - WAPA Powerline Trail
 - Recreational opportunities
 - Connectivity of existing sidewalks/paths within Mills
 - Connectivity of sidewalks/paths to Casper
 - Prioritize sidewalk/path needs
 - Complete Streets typical cross sections
- Modify the Town Code to require construction of wider sidewalks (underway)

Bus Service

- Adopt a Transit Plan
 - Identify bus stop improvements
 - Evaluate the expansion of bus routes, service days and hours
 - Prioritize improvements

Maintenance

- Update the road maintenance plan
 - Cross street signage
 - Sidewalk and road repair
 - Identify locations and prioritize



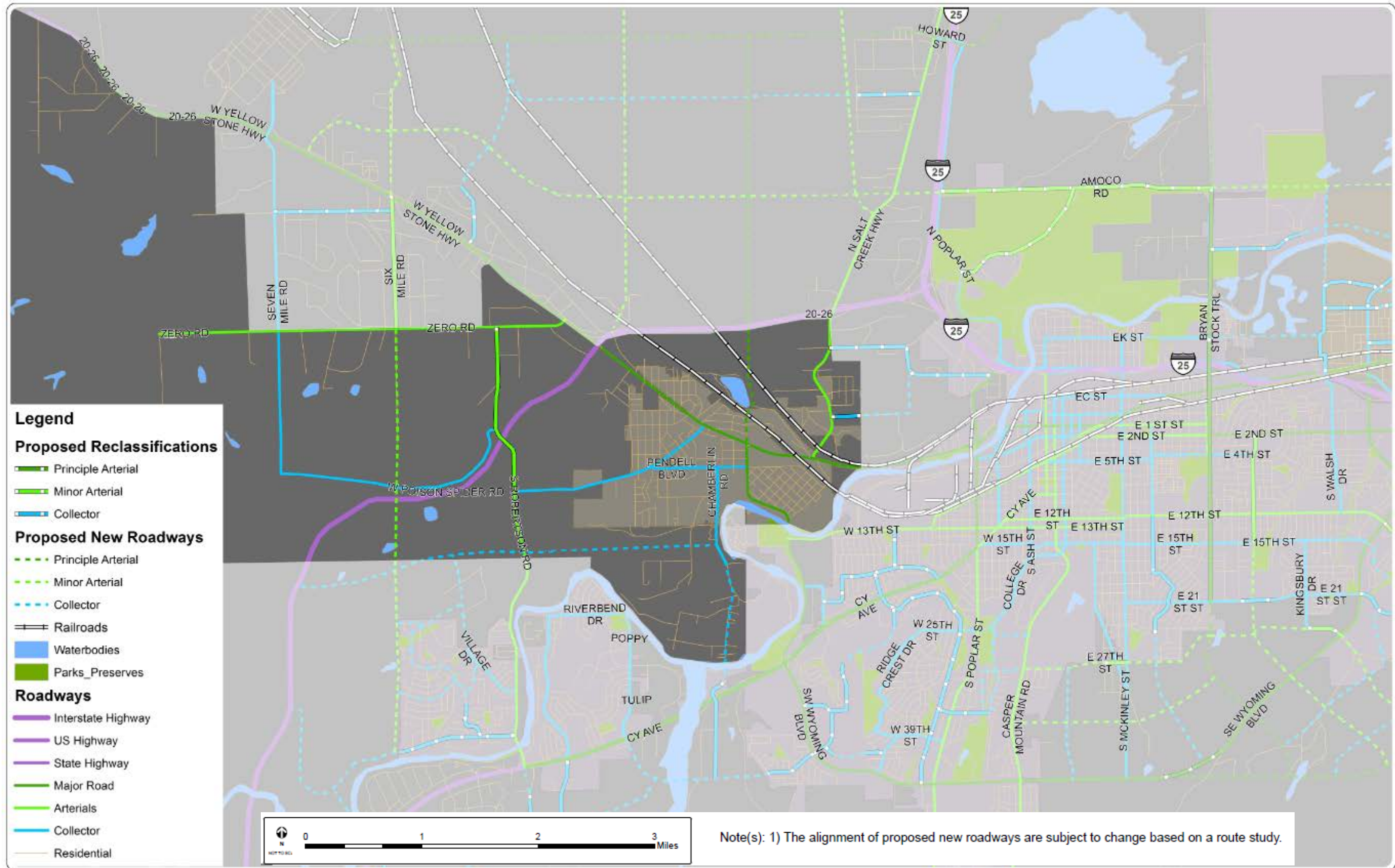
Major Street Plan

The Major Street Plan serves as a guiding map for development of an adequate and properly-spaced network of arterials and collectors for Mills, and to help achieve desired land use patterns and the benefits described in the previous sections. It shows where right-of-way should be preserved and provides a framework from which the Town can evaluate future infrastructure needs when approached by developers or when funding opportunities arise. As development expands west of Six Mile Road, it is recommended that additional Arterial and Collector Roadways be considered to meet the recommended one mile spacing standard.

The locations of new roadways shown on Figure 7, were primarily based on the MPO's adopted Long Range Transportation Plan and proposed plans for Mills, while others were based on the extension of existing roadways in Casper and in nearby developed areas. New roadways in the developed areas were recommended based on existing uses, proposed new uses, topography, water infrastructure, public input, and the concepts of roadway spacing identified above.

The Major Street Plan does not identify future local roads since the location of those roadways will be determined by type and density of development to be constructed. However, in order to achieve a transportation network that supports the associated development, it is recommended that the concepts of driveway and intersection spacing, mix of uses and interconnected development be fully enforced. Planned future roadways can be seen on Figure 7.

Figure 7 - Major Street Plan



CHAPTER 4: MOVING FORWARD

Implementation

Implementation is the key to a successful plan and it is the responsibility of the entire community to guide the implementation. Elected officials and residents both play a part and all decisions ultimately guide the community's vision. Therefore, it is essential that the community remain focused on the successful implementation of this Plan.

Elected Officials are responsible for:

1. Making decisions consistent with this Plan;
2. Receiving and reviewing the annual reports presented by staff;
3. Determining the strategies to be included in the implementation work plan for the next year;
4. Allocating the necessary funding to implement the goals and strategies contained in this Plan; and
5. Collaborating with other governmental and non-governmental service providers.

The Community is responsible for:

1. Staying involved in local government and monitoring the decisions of elected officials, MPO staff and other governmental and quasi-governmental agencies.
2. Developers should follow the principles and goals of the 1994 Community Development Plan through design and implementation of their projects.
3. Governmental and quasi-governmental agencies should integrate the goals of the 1994 Community Development Plan into their strategic plans.

Short Term Prioritized List of Projects/Actions

- Adopt an Active Transportation Plan
- Study opportunities to provide access across SW Wyoming Blvd to Town Hall area (underway)
- Evaluate opportunities for access to North Platte River in new Downtown area (underway)
- Expand regional pedestrian and bicycle network, including the WAPA (Western Area Power Administration) Powerline Trail
- Provide Recreational opportunities
- Provide connectivity of existing sidewalks/paths
- Prioritize sidewalk/path needs
- Adopt Complete Streets typical cross sections
- Modify the Town Code to require construction of wider sidewalks (underway)
- Adopt a Transit Plan
- Update the road maintenance plan



Long Term Prioritized List of Projects/Actions

- Chamberlain Road extension to the south, connecting to Energy Lane across the river
- Hudson Street extension from Yellowstone Highway north to 20/26 within the Town of Mills, potentially extending north to Howard Street extension in the future
- Six Mile Road extension through Mills, connecting to Trevett Lane to the south
- E/W roadway connecting West Belt Road with Chamberlain Road
- Village Drive extension to E/W roadway

Strategies

Implementation

This Plan outlines a number of recommendations to address the transportation needs of Mills. The next step would be to evaluate those recommendations, determine which ones to move forward with, and prioritize them. Some items to consider during prioritization include time to complete, cost, level of benefit, and available funding.

Funding

Funding is a key component of any plan to get recommendations implemented. There are many avenues to obtain funds, some require modification of existing Town ordinances, while others require collaboration with others.

A source of funding that would support the town's vision of supporting bicyclists and pedestrians is the mobility fee. This fee is similar to the transportation impact fee, but can be utilized for non-auto modes such as bikes and pedestrians. The Town should consider modifying the Town Code to incorporate mobility fees.

We have discussed in this plan that there is a need for non-residential uses to reduce traffic impacts and to promote biking and walking. Another advantage of non-residential uses, such as commercial uses, is the additional revenue that is generated by this type of business. The Town should consider incentives to promote land uses that generate revenue. This could require changes to the existing Town Code to support the vision.

Other mechanisms of funding that should be considered include the collaboration of businesses to create an Improvement District or the issuance of bonds.

Appendix A

Public Input



Take this survey to help guide the transportation plan and be entered to win a gift card to local business.

THANK YOU FOR YOUR TIME!

Contact Information: Name [REDACTED] Email/Phone [REDACTED]

1. Where do you live?

Mills Other community (Where? by Ghost Town Truck Stop.)

2. What do you like most about your community?

like the friendly community

3. What aspects of the Town do you think need improving?

Fishing Dock sounds nice

4. How can the MPO Staff get you involved in building a vision for the community?

More community events like this one Provide surveys in person or online
 Discuss at Town Meetings
 Other (Note: _____.)

5. On a scale of 1 to 10, how happy are you overall with your community?

1-----2-----3-----4-----5-----6-----7-----8-----9-----10

6. On a scale of 1 to 10, how happy are you with transportation and roads in your community?

1-----2-----3-----4-----5-----6-----7-----8-----9-----10

7. Which modes of transportation do you use?

Car/Truck Bus Carpool
 Bike Walk

8. How familiar are you with The Bus and available services?

Very familiar I know there is a bus Not familiar
 Somewhat familiar in town, but not the I didn't know we had
details. a bus.

9. What, if any, do you feel are the main transportation issues within the community?

not that aware of any-

10. Is there anything that you would like to mention about your community that has not been addressed in this survey?

No



Take this survey to help guide the transportation plan and be entered to win a gift card to local business.

THANK YOU FOR YOUR TIME!

Contact Information: Name [REDACTED] Email/Phone [REDACTED]

1. Where do you live?

Mills Other community (Where? _____.)

2. What do you like most about your community?

Quiet

3. What aspects of the Town do you think need improving?

more shopping centers and restaurants

4. How can the MPO Staff get you involved in building a vision for the community?

More community events like this one Provide surveys in person or online
 Discuss at Town Meetings
 Other (Note: _____.)

5. On a scale of 1 to 10, how happy are you overall with your community?

1-----2-----3-----4-----5-----6-----7-----8-----9-----10

9

6. On a scale of 1 to 10, how happy are you with transportation and roads in your community?

1-----2-----3-----4-----5-----6-----7-----8-----9-----10

9

7. Which modes of transportation do you use?

Car/Truck Bus Carpool
 Bike Walk

8. How familiar are you with The Bus and available services?

Very familiar I know there is a bus Not familiar
 Somewhat familiar in town, but not the I didn't know we had
details. a bus.

9. What, if any, do you feel are the main transportation issues within the community?

more buses + stops + on weekends

10. Is there anything that you would like to mention about your community that has not been addressed in this survey?

N/A



Take this survey to help guide the transportation plan and be entered to win a gift card to local business.

THANK YOU FOR YOUR TIME!

Contact Information: Name [REDACTED] Email/Phone [REDACTED]

1. Where do you live?

Mills Other community (Where? 4476 Mt. View Dr.)

2. What do you like most about your community?

Friendly people

3. What aspects of the Town do you think need improving?

Cleaning up properties

4. How can the MPO Staff get you involved in building a vision for the community?

More community events like this one Provide surveys in person or online
 Discuss at Town Meetings
 Other (Note: _____.)

5. On a scale of 1 to 10, how happy are you overall with your community?

1---2---3---4---5---6---7---8---9---10
6

6. On a scale of 1 to 10, how happy are you with transportation and roads in your community?

1---2---3---4---5---6---7---8---9---10
4

7. Which modes of transportation do you use?

Car/Truck Bus Carpool
 Bike Walk

8. How familiar are you with The Bus and available services?

Very familiar I know there is a bus Not familiar
 Somewhat familiar in town, but not the I didn't know we had
details. a bus.

9. What, if any, do you feel are the main transportation issues within the community?

hard to afford on income disability

10. Is there anything that you would like to mention about your community that has not been addressed in this survey?

no



Take this survey to help guide the transportation plan and be entered to win a gift card to local business.

THANK YOU FOR YOUR TIME!

Contact Information: Name [REDACTED] Email/Phone [REDACTED]

1. Where do you live?

Mills Other community (Where? _____.)

2. What do you like most about your community?

small town with little crime

3. What aspects of the Town do you think need improving?

more activities for children / maybe a youth center, more ^{adult books in} library

4. How can the MPO Staff get you involved in building a vision for the community?

More community events like this one Provide surveys in person or online
 Discuss at Town Meetings
 Other (Note: _____.)

5. On a scale of 1 to 10, how happy are you overall with your community?

1----2----3----4--(5)--6----7----8----9----10

6. On a scale of 1 to 10, how happy are you with transportation and roads in your community?

sidewalks need work
1----2----3--(4)--5----6----7----8----9----10

7. Which modes of transportation do you use?

Car/Truck Bus Carpool
 Bike Walk

8. How familiar are you with The Bus and available services?

Very familiar I know there is a bus Not familiar
 Somewhat familiar in town, but not the I didn't know we had
details. a bus.

9. What, if any, do you feel are the main transportation issues within the community?

not enough sidewalks, slash needs some repair

10. Is there anything that you would like to mention about your community that has not been addressed in this survey?

parks do not have special needs equipment



Take this survey to help guide the transportation plan and be entered to win a gift card to local business.

THANK YOU FOR YOUR TIME!

Contact Information: Name [REDACTED] Email/Phone [REDACTED]

1. Where do you live?

Mills Other community (Where? _____.)

2. What do you like most about your community?

It's quiet

3. What aspects of the Town do you think need improving?

Dumping of trash on land

4. How can the MPO Staff get you involved in building a vision for the community?

More community events like this one Provide surveys in person or online

Discuss at Town Meetings

Other (Note: _____.)

5. On a scale of 1 to 10, how happy are you overall with your community?

1----2----3----4----5----6----7----8----9----10

10

6. On a scale of 1 to 10, how happy are you with transportation and roads in your community?

1----2----3----4----5----6----7----8----9----10

8

7. Which modes of transportation do you use?

1 Car/Truck

Bike

3 Bus - kids use sometimes Carpool

2 Walk

8. How familiar are you with The Bus and available services?

Very familiar

Somewhat familiar

I know there is a bus
in town, but not the
details.

Not familiar

I didn't know we had
a bus.

9. What, if any, do you feel are the main transportation issues within the community?

I don't have any issues w/ transportation

10. Is there anything that you would like to mention about your community that has not been addressed in this survey?

No



Take this survey to help guide the transportation plan and be entered to win a gift card to local business.

THANK YOU FOR YOUR TIME!

Contact Information: Name  Email/Phone 

1. Where do you live?

Mills Other community (Where? Cooper - W side / Milk.)

2. What do you like most about your community?

All the events for children + families

3. What aspects of the Town do you think need improving?

Roads especially neighbor roads, side roads

4. How can the MPO Staff get you involved in building a vision for the community?

More community events like this one Provide surveys in person or online
 Discuss at Town Meetings
 Other (Note: _____.)

5. On a scale of 1 to 10, how happy are you overall with your community?

1-----2-----3-----4-----5-----6-----7-----8-----9-----10
7

6. On a scale of 1 to 10, how happy are you with transportation and roads in your community?

1-----2-----3-----4-----5-----6-----7-----8-----9-----10
4

7. Which modes of transportation do you use?

Car/Truck Bus Carpool
 Bike Walk

8. How familiar are you with The Bus and available services?

Very familiar I know there is a bus Not familiar
 Somewhat familiar in town, but not the I didn't know we had
details. a bus.

9. What, if any, do you feel are the main transportation issues within the community?

~~Bus~~ Bus timing takes awhile to get somewhere.

10. Is there anything that you would like to mention about your community that has not been addressed in this survey?

More family activities



Take this survey to help guide the transportation plan and be entered to win a gift card to local business.

THANK YOU FOR YOUR TIME!

Contact Information: Name [REDACTED] Email/Phone [REDACTED]

1. Where do you live?

Mills Other community (Where? _____.)

2. What do you like most about your community?

My area is quite

3. What aspects of the Town do you think need improving?

_____.

4. How can the MPO Staff get you involved in building a vision for the community?

More community events like this one Provide surveys in person or online

Discuss at Town Meetings

Other (Note: _____.)

5. On a scale of 1 to 10, how happy are you overall with your community?

1-----2-----3-----4-----5-----6-----7-----8-----9-----10

6. On a scale of 1 to 10, how happy are you with transportation and roads in your community?

1-----2-----3-----4-----5-----6-----7-----8-----9-----10

7. Which modes of transportation do you use?

Car/Truck

Bus

Carpool

Bike

Walk

8. How familiar are you with The Bus and available services?

Very familiar

I know there is a bus

Not familiar

Somewhat familiar

in town, but not the
details.

I didn't know we had
a bus.

9. What, if any, do you feel are the main transportation issues within the community?

Winter roads

10. Is there anything that you would like to mention about your community that has not been addressed in this survey?

_____.



Take this survey to help guide the transportation plan and be entered to win a gift card to local business.

THANK YOU FOR YOUR TIME!

Contact Information: Name [REDACTED] Email/Phone [REDACTED]

1. Where do you live?

Mills Other community (Where? _____.)

2. What do you like most about your community?

Affordable housing, taxes, etc.; Proximity to Belt Loop & Airport

3. What aspects of the Town do you think need improving?

We need more & diversified commercial opportunities } grocery, family restaurants, recreation
Walking Paths & Parks!!
what does "MPO" mean?

4. How can the MPO Staff get you involved in building a vision for the community?

More community events like this one Provide surveys in person or online
 Discuss at Town Meetings
 Other (Note: _____.)

5. On a scale of 1 to 10, how happy are you overall with your community?

1-----2-----3-----4-----5-----6-----7-----8-----9-----10
3

6. On a scale of 1 to 10, how happy are you with transportation and roads in your community?

1-----2-----3-----4-----5-----6-----7-----8-----9-----10
9

7. Which modes of transportation do you use?

Car/Truck Bus Carpool
 Bike Walk

8. How familiar are you with The Bus and available services?

Very familiar I know there is a bus
 Somewhat familiar in town, but not the details.
 Not familiar I didn't know we had a bus.

9. What, if any, do you feel are the main transportation issues within the community?

Not familiar w/ any issues

10. Is there anything that you would like to mention about your community that has not been addressed in this survey?

No, just excited at the opportunity to spur diverse growth for the community.



Take this survey to help guide the transportation plan and be entered to win a gift card to local business.

THANK YOU FOR YOUR TIME!

Contact Information: Name [REDACTED] Email/Phone [REDACTED]

1. Where do you live?

Mills Other community (Where? _____.)

2. What do you like most about your community?

It's getting bigger & better

3. What aspects of the Town do you think need improving?

Keep streets up better - use taxes better

4. How can the MPO Staff get you involved in building a vision for the community?

More community events like this one Provide surveys in person or online

Discuss at Town Meetings

Other (Note: Free Food Events.)

5. On a scale of 1 to 10, how happy are you overall with your community?

1-----2-----3-----4-----5-----6-----7-----8-----9-----10[Ⓢ]

6. On a scale of 1 to 10, how happy are you with transportation and roads in your community?

1-----2-----3-----4-----5[Ⓢ]-----6-----7-----8-----9-----10

7. Which modes of transportation do you use?

Car/Truck

Bus

Carpool

Bike

Walk

8. How familiar are you with The Bus and available services?

Very familiar

I know there is a bus

Not familiar

Somewhat familiar

in town, but not the details.

I didn't know we had a bus.

9. What, if any, do you feel are the main transportation issues within the community?

Need more busses & drivers for busses

10. Is there anything that you would like to mention about your community that has not been addressed in this survey?



Take this survey to help guide the transportation plan and be entered to win a gift card to local business.

THANK YOU FOR YOUR TIME!

Contact Information: Name _____ Email/Phone no thank you

1. Where do you live?

Mills _____ Other community (Where? _____.)

2. What do you like most about your community?

wildlife

3. What aspects of the Town do you think need improving?

4. How can the MPO Staff get you involved in building a vision for the community?

_____ More community events like this one _____ Provide surveys in person or online

_____ Discuss at Town Meetings

_____ Other (Note: _____.)

5. On a scale of 1 to 10, how happy are you overall with your community?

1-----2-----3-----4-----5-----6-----7-----8-----9-----10

6. On a scale of 1 to 10, how happy are you with transportation and roads in your community?

1-----2-----3-----4-----5-----6-----7-----8-----9-----10

7. Which modes of transportation do you use?

Car/Truck

_____ Bus

_____ Carpool

_____ Bike

_____ Walk

8. How familiar are you with The Bus and available services?

_____ Very familiar

I know there is a bus
in town, but not the
details.

_____ Not familiar

_____ Somewhat familiar

_____ I didn't know we had
a bus.

9. What, if any, do you feel are the main transportation issues within the community?

live at posienwood - need a park

10. Is there anything that you would like to mention about your community that has not been addressed in this survey?

petting, amusement park



Take this survey to help guide the transportation plan and be entered to win a gift card to local business.

THANK YOU FOR YOUR TIME!

Contact Information: Name _____ Email/Phone _____

1. Where do you live?

Mills Other community (Where? _____.)

2. What do you like most about your community?

3. What aspects of the Town do you think need improving?

Splash pad at River park

4. How can the MPO Staff get you involved in building a vision for the community?

More community events like this one Provide surveys in person or online

Discuss at Town Meetings

Other (Note: _____.)

5. On a scale of 1 to 10, how happy are you overall with your community?

1----2----3----4----5----6----7----8----9----10

6. On a scale of 1 to 10, how happy are you with transportation and roads in your community?

1----2----3----4----5----6----7----8----9----10

7. Which modes of transportation do you use?

Car/Truck

Bus

Carpool

Bike

Walk

8. How familiar are you with The Bus and available services?

Very familiar

I know there is a bus

Not familiar

Somewhat familiar

in town, but not the
details.

I didn't know we had
a bus.

9. What, if any, do you feel are the main transportation issues within the community?

Slow- increase speeds, ~~near~~ crossing of SW way.

10. Is there anything that you would like to mention about your community that has not been addressed in this survey?

mail delivery



Take this survey to help guide the transportation plan and be entered to win a gift card to local business.

THANK YOU FOR YOUR TIME!

Contact Information: Name _____ Email/Phone _____

1. Where do you live?

Mills Other community (where? _____)

2. What do you like most about your community?

people

3. What aspects of the Town do you think need improving?

Still live, not change, in the river construction

4. How can the MPO Staff get you involved in building a vision for the community?

More community events like this one Provide surveys in person or online
 Discuss at Town Meetings
 Other (Note: _____)

5. On a scale of 1 to 10, how happy are you overall with your community?

1----2----3----4----5----6----7----8----9----10 20!

6. On a scale of 1 to 10, how happy are you with transportation and roads in your community?

1----2----3----4----5----6----7----8----9----10

7. Which modes of transportation do you use?

Car/Truck Bus Carpool
 Bike Walk

8. How familiar are you with The Bus and available services?

Very familiar I know there is a bus in town, but not the details. Not familiar
 Somewhat familiar I didn't know we had a bus.

9. What, if any, do you feel are the main transportation issues within the community?

My Blvd + fly alleys (all dirt) need paved
marshes, signs - sidestreets (6th + Riverview)

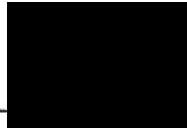
10. Is there anything that you would like to mention about your community that has not been addressed in this survey?

closing mills elementary. new schools.



Take this survey to help guide the transportation plan and be entered to win a gift card to local business.

THANK YOU FOR YOUR TIME!



Contact Information: Name _____ Email/Phone _____

1. Where do you live?

Mills Other community (Where? _____.)

2. What do you like most about your community?

less government

3. What aspects of the Town do you think need improving?

Roads

4. How can the MPO Staff get you involved in building a vision for the community?

More community events like this one Provide surveys in person or online
 Discuss at Town Meetings
 Other (Note: Listen when told.)

5. On a scale of 1 to 10, how happy are you overall with your community?

1----2----3----4----5----6---(7)---8----9----10

6. On a scale of 1 to 10, how happy are you with transportation and roads in your community?

1----2----3----4----5----6---(7)---8----9----10

7. Which modes of transportation do you use?

Car/Truck Bus Carpool
 Bike Walk

8. How familiar are you with The Bus and available services?

Very familiar I know there is a bus Not familiar
 Somewhat familiar in town, but not the details. I didn't know we had a bus.

9. What, if any, do you feel are the main transportation issues within the community?

Dont need Bus

10. Is there anything that you would like to mention about your community that has not been addressed in this survey?



Take this survey to help guide the transportation plan and be entered to win a gift card to local business.

THANK YOU FOR YOUR TIME!

Contact Information: Name _____ Email/Phone _____

1. Where do you live?

Mills ___ Other community (Where? _____.)

2. What do you like most about your community?

small

3. What aspects of the Town do you think need improving?

more entertainment

4. How can the MPO Staff get you involved in building a vision for the community?

More community events like this one Provide surveys in person or online

Discuss at Town Meetings

___ Other (Note: _____.)

5. On a scale of 1 to 10, how happy are you overall with your community?

1----2----3----4----5----6----7----8----9----10

6. On a scale of 1 to 10, how happy are you with transportation and roads in your community?

1----2----3----4----5----6----7----8----9----10

7. Which modes of transportation do you use?

Car/Truck ___ Bus ___ Carpool

Bike ___ Walk

8. How familiar are you with The Bus and available services?

___ Very familiar

___ I know there is a bus

___ Not familiar

Somewhat familiar

in town, but not the details.

___ I didn't know we had a bus.

9. What, if any, do you feel are the main transportation issues within the community?

need public transport in evening + weekends

10. Is there anything that you would like to mention about your community that has not been addressed in this survey?

recycle depot close 😊



Take this survey to help guide the transportation plan and be entered to win a gift card to local business.

THANK YOU FOR YOUR TIME!

Contact Information: Name _____ Email/Phone _____

1. Where do you live?

Mills Other community (Where? _____.)

2. What do you like most about your community?

3. What aspects of the Town do you think need improving?

4. How can the MPO Staff get you involved in building a vision for the community?

More community events like this one Provide surveys in person or online

Discuss at Town Meetings

Other (Note: _____.)

5. On a scale of 1 to 10, how happy are you overall with your community?

1-----2-----3-----4-----5-----6-----7-----8-----9-----10

6. On a scale of 1 to 10, how happy are you with transportation and roads in your community?

1-----2-----3-----4-----5-----6-----7-----8-----9-----10

7. Which modes of transportation do you use?

Car/Truck

Bus

Carpool

Bike

Walk

8. How familiar are you with The Bus and available services?

Very familiar

I know there is a bus
in town, but not the
details.

Not familiar

Somewhat familiar

I didn't know we had
a bus.

9. What, if any, do you feel are the main transportation issues within the community?

10. Is there anything that you would like to mention about your community that has not been addressed in this survey?



Take this survey to help guide the transportation plan and be entered to win a gift card to local business.

THANK YOU FOR YOUR TIME!

Contact Information: Name [REDACTED] Email/Phone [REDACTED]

1. Where do you live?

Mills Other community (Where? _____.)

2. What do you like most about your community?

small and quiet

3. What aspects of the Town do you think need improving?

See more accountability for upkeep of personal property - too many ill-cared for & neglected yards and dwellings.

4. How can the MPO Staff get you involved in building a vision for the community?

More community events like this one Provide surveys in person or online
 Discuss at Town Meetings
 Other (Note: _____.)

5. On a scale of 1 to 10, how happy are you overall with your community?

1----2----3----4----5----6----7----8----9----10

6. On a scale of 1 to 10, how happy are you with transportation and roads in your community?

1----2----3----4----5----6----7----8----9----10

7. Which modes of transportation do you use?

Car/Truck Bus Carpool
 Bike Walk

8. How familiar are you with The Bus and available services?

Very familiar I know there is a bus in town, but not the details. Not familiar
 Somewhat familiar I didn't know we had a bus.

9. What, if any, do you feel are the main transportation issues within the community?

safe biking & walking access to River Trail system - need bike trail along WYO Blvd @ mills & through Mills

10. Is there anything that you would like to mention about your community that has not been addressed in this survey?



Take this survey to help guide the transportation plan and be entered to win a gift card to local business.

YOUR TIME!

Contact Information: Name _____

Phone _____

1. Where do you live?

Mills Other community (Where? _____.)

2. What do you like most about your community?

It is quiet

3. What aspects of the Town do you think need improving?

The roads

4. How can the MPO Staff get you involved in building a vision for the community?

More community events like this one Provide surveys in person or online
 Discuss at Town Meetings
 Other (Note: _____.)

5. On a scale of 1 to 10, how happy are you overall with your community?

1---2---3---4---5---6---7---8---9 10

6. On a scale of 1 to 10, how happy are you with transportation and roads in your community?

1---2---3---4---5---6 7---8---9---10

7. Which modes of transportation do you use?

Car/Truck Bus Carpool
 Bike Walk

8. How familiar are you with The Bus and available services?

Very familiar I know there is a bus Not familiar
 Somewhat familiar in town, but not the details. I didn't know we had a bus.

9. What, if any, do you feel are the main transportation issues within the community?

Do not know

10. Is there anything that you would like to mention about your community that has not been addressed in this survey?

No



Take this survey to help guide the transportation plan and be entered to win a gift card to local business.

THANK YOU FOR YOUR TIME!

Contact Information: Name

ne

1. Where do you live?

Mills Other community (Where? _____.)

2. What do you like most about your community?

low crime

3. What aspects of the Town do you think need improving?

more stuff kids, activities.

4. How can the MPO Staff get you involved in building a vision for the community?

More community events like this one Provide surveys in person or online
 Discuss at Town Meetings
 Other (Note: _____.)

5. On a scale of 1 to 10, how happy are you overall with your community?

1----2----3----4----5----6----7----8----9----10

6. On a scale of 1 to 10, how happy are you with transportation and roads in your community?

1----2----3----4----5----6----7----8----9----10

7. Which modes of transportation do you use?

Car/Truck Bus Carpool
 Bike Walk

needs to increase service & bus stops.

8. How familiar are you with The Bus and available services?

Very familiar I know there is a bus Not familiar
 Somewhat familiar in town, but not the details. I didn't know we had a bus.

9. What, if any, do you feel are the main transportation issues within the community?

10. Is there anything that you would like to mention about your community that has not been addressed in this survey?

River parties



Take this survey to help guide the transportation plan and be entered to win a gift card to local business.

THANK YOU FOR YOUR TIME!

Contact Information: Name [redacted] Email/Phone [redacted]

1. Where do you live?

Mills ___ Other community (Where? _____.)

2. What do you like most about your community?

proximity to things, close to work.

3. What aspects of the Town do you think need improving?

4. How can the MPO Staff get you involved in building a vision for the community?

More community events like this one ___ Provide surveys in person or online
___ Discuss at Town Meetings bring everyone in
___ Other (Note: _____.)

5. On a scale of 1 to 10, how happy are you overall with your community?

1----2----3----4----5----6----7----8----9----10

8

6. On a scale of 1 to 10, how happy are you with transportation and roads in your community?

1----2----3----4----5----6----7----8----9----10

mufflers, mainderry city ordinance

7. Which modes of transportation do you use?

Car/Truck ___ Bus ___ Carpool
 Bike on trails ___ Walk

8. How familiar are you with The Bus and available services?

___ Very familiar ___ I know there is a bus ___ Not familiar
___ Somewhat familiar in town, but not the details. ___ I didn't know we had a bus.

9. What, if any, do you feel are the main transportation issues within the community?

Trail extended. unconnective to post office.
no sidewalk

10. Is there anything that you would like to mention about your community that has not been addressed in this survey?

nice restaurants, grow a little, more shopping.



Take this survey to help guide the transportation plan and be entered to win a gift card to local business.

THANK YOU FOR YOUR TIME!

Contact Information: Name [REDACTED] Email/Phone [REDACTED]

1. Where do you live?

Mills Other community (Where? _____.)

2. What do you like most about your community?

smaller w good access to town govt, relaxed, green spaces

3. What aspects of the Town do you think need improving?

snow removal

4. How can the MPO Staff get you involved in building a vision for the community?

More community events like this one Provide surveys in person or online
 Discuss at Town Meetings
 Other (Note: _____.)

5. On a scale of 1 to 10, how happy are you overall with your community?

1----2----3----4----5----6----7---(8)----9----10

6. On a scale of 1 to 10, how happy are you with transportation and roads in your community?

1----2----3----4----5----6----7---(8)----9----10

7. Which modes of transportation do you use?

Car/Truck Bus Carpool
 Bike Walk

8. How familiar are you with The Bus and available services?

Very familiar I know there is a bus Not familiar
 Somewhat familiar in town, but not the details. I didn't know we had a bus.

9. What, if any, do you feel are the main transportation issues within the community?

Too many stoplights

10. Is there anything that you would like to mention about your community that has not been addressed in this survey?

improve website - post events like this



Take this survey to help guide the transportation plan and be entered to win a gift card to local business.

THANK YOU FOR YOUR TIME!

Contact Information: Name [redacted] Email/Phone [redacted]

1. Where do you live?

Mills Other community (Where? _____.)

2. What do you like most about your community?

The small feel

3. What aspects of the Town do you think need improving?

Businesses + more family activities

4. How can the MPO Staff get you involved in building a vision for the community?

More community events like this one Provide surveys in person or online
 Discuss at Town Meetings
 Other (Note: _____.)

5. On a scale of 1 to 10, how happy are you overall with your community?

1-----2-----3-----4-----5-----6-----7-----8-----9-----10
4

6. On a scale of 1 to 10, how happy are you with transportation and roads in your community?

1-----2-----3-----4-----5-----6-----7-----8-----9-----10
9

7. Which modes of transportation do you use?

Car/Truck Bus Carpool
 Bike Walk

8. How familiar are you with The Bus and available services?

Very familiar I know there is a bus Not familiar
 Somewhat familiar in town, but not the I didn't know we had
details. a bus.

9. What, if any, do you feel are the main transportation issues within the community?

NA

10. Is there anything that you would like to mention about your community that has not been addressed in this survey?

NA



Take this survey to help guide the transportation plan and be entered to win a gift card to local business.

THANK YOU FOR YOUR TIME!

Contact Information: Name [REDACTED] /Phone [REDACTED]

1. Where do you live?

Mills Other community (Where? _____.)

2. What do you like most about your community?

_____.

3. What aspects of the Town do you think need improving?

_____.

4. How can the MPO Staff get you involved in building a vision for the community?

More community events like this one Provide surveys in person or online

Discuss at Town Meetings

Other (Note: _____.)

5. On a scale of 1 to 10, how happy are you overall with your community?

1---2---3---4---5---6---7---8---9---10

6. On a scale of 1 to 10, how happy are you with transportation and roads in your community?

1---2---3---4---5---6---7---8---9---10

7. Which modes of transportation do you use?

Car/Truck

Bus

Carpool

Bike

Walk

8. How familiar are you with The Bus and available services?

Very familiar

I know there is a bus
in town, but not the
details.

Not familiar

Somewhat familiar

I didn't know we had
a bus.

9. What, if any, do you feel are the main transportation issues within the community?

_____.

10. Is there anything that you would like to mention about your community that has not been addressed in this survey?

_____.



Take this survey to help guide the transportation plan and be entered to win a gift card to local business.

THANK YOU FOR YOUR TIME!

Contact Information: Name [REDACTED] Email/Phone [REDACTED]

1. Where do you live?

Mills Other community (Where? _____.)

2. What do you like most about your community?

Its comfortable

3. What aspects of the Town do you think need improving?

4. How can the MPO Staff get you involved in building a vision for the community?

More community events like this one Provide surveys in person or online
 Discuss at Town Meetings
 Other (Note: _____.)

5. On a scale of 1 to 10, how happy are you overall with your community?

1----2----3----4----5----6----7----8----9----10

6. On a scale of 1 to 10, how happy are you with transportation and roads in your community?

1----2----3----4----5----6----7----8----9----10

7. Which modes of transportation do you use?

Car/Truck Bus Carpool
 Bike Walk

8. How familiar are you with The Bus and available services?

Very familiar I know there is a bus Not familiar
 Somewhat familiar in town, but not the I didn't know we had
details. a bus.

9. What, if any, do you feel are the main transportation issues within the community?

OK for now

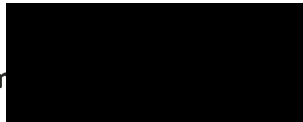
10. Is there anything that you would like to mention about your community that has not been addressed in this survey?



Take this survey to help guide the transportation plan and be entered to win a gift card to local business.

THANK YOU FOR YOUR TIME!

Contact Information: Name



Email/Phone



1. Where do you live?

Mills Other community (Where? _____.)

2. What do you like most about your community?

Place is very clean quite

3. What aspects of the Town do you think need improving?

We need more for families water park baseball park

4. How can the MPO Staff get you involved in building a vision for the community?

- More community events like this one
- Discuss at Town Meetings
- Provide surveys in person or online
- Other (Note: _____.)

5. On a scale of 1 to 10, how happy are you overall with your community?

1-----2-----3-----4-----5-----6-----7-----8-----9-----10

6. On a scale of 1 to 10, how happy are you with transportation and roads in your community?

1-----2-----3-----4-----5-----6-----7-----8-----9-----10

7. Which modes of transportation do you use?

- Car/Truck
- Bus
- Carpool
- Bike
- Walk

8. How familiar are you with The Bus and available services?

- Very familiar
- Somewhat familiar
- I know there is a bus in town, but not the details.
- Not familiar
- I didn't know we had a bus.

9. What, if any, do you feel are the main transportation issues within the community?

N/A

10. Is there anything that you would like to mention about your community that has not been addressed in this survey?

N/A



Take this survey to help guide the transportation plan and be entered to win a gift card to local business.

THANK YOU FOR YOUR TIME!

Contact Information: Name _____ Mail/Phone _____

1. Where do you live?
 Mills Other community (Where? _____.)

2. What do you like most about your community?

I've been here over 50 yrs. Like the room

3. What aspects of the Town do you think need improving?
Get rid of cats running all over if you make laws - enforce them -

4. How can the MPO Staff get you involved in building a vision for the community?

More community events like this one Provide surveys in person or online
 Discuss at Town Meetings
 Other (Note: _____.)

5. On a scale of 1 to 10, how happy are you overall with your community?

1-----2-----3-----4-----5-----6-----7-----8-----9-----10

6. On a scale of 1 to 10, how happy are you with transportation and roads in your community?

1-----2-----3-----4-----5-----6-----7-----8-----9-----10

7. Which modes of transportation do you use?

Car/Truck Bus Carpool
 Bike Walk

8. How familiar are you with The Bus and available services?

Very familiar I know there is a bus Not familiar
 Somewhat familiar in town, but not the I didn't know we had
details. a bus.

9. What, if any, do you feel are the main transportation issues within the community?

?

10. Is there anything that you would like to mention about your community that has not been addressed in this survey?



Take this survey to help guide the transportation plan and be entered to win a gift card to local business.

THANK YOU FOR YOUR TIME!

Contact Information: Name _____ Email/Phone _____

1. Where do you live?

Mills ___ Other community (Where? _____.)

2. What do you like most about your community?

Love all the events / Always something to do. The Libraries

3. What aspects of the Town do you think need improving?

The Roads,

4. How can the MPO Staff get you involved in building a vision for the community?

More community events like this one ___ Provide surveys in person or online

___ Discuss at Town Meetings

Other (Note: Help out with people who have no way to take.)

5. On a scale of 1 to 10, how happy are you overall with your community? things to landfill

1----2----3----4----5----6----7---(8)---9----10

6. On a scale of 1 to 10, how happy are you with transportation and roads in your community?

1----2----3----4---(5)---6----7----8----9----10

7. Which modes of transportation do you use?

Car/Truck

___ Bus

___ Carpool

___ Bike

Walk

8. How familiar are you with The Bus and available services?

___ Very familiar

___ I know there is a bus

___ Not familiar

Somewhat familiar

in town, but not the details.

___ I didn't know we had a bus.

9. What, if any, do you feel are the main transportation issues within the community?

Bus routes / rides are long. Mills needs to run on Saturdays + Sundays

10. Is there anything that you would like to mention about your community that has not been addressed in this survey?

The water pressure ~~is~~ could be better. Transition would be nice



Take this survey to help guide the transportation plan and be entered to win a gift card to local business.

THANK YOU FOR YOUR TIME!

Contact Information: Name _____ mail/Phone _____

1. Where do you live?

Mills Other community (Where? _____.)

2. What do you like most about your community?

3. What aspects of the Town do you think need improving?

SNOW Removal on streets in Mt View

4. How can the MPO Staff get you involved in building a vision for the community?

More community events like this one Provide surveys in person or online
 Discuss at Town Meetings
 Other (Note: _____.)

5. On a scale of 1 to 10, how happy are you overall with your community?

1----2----3----4----5----6----7----8----9----10

6. On a scale of 1 to 10, how happy are you with transportation and roads in your community?

1----2----3----4----5----6----7----8----9----10

7. Which modes of transportation do you use?

Car/Truck Bus Carpool
 Bike Walk

8. How familiar are you with The Bus and available services?

Very familiar I know there is a bus
 Somewhat familiar in town, but not the details.
 Not familiar I didn't know we had a bus.

9. What, if any, do you feel are the main transportation issues within the community?

10. Is there anything that you would like to mention about your community that has not been addressed in this survey?



Take this survey to help guide the transportation plan and be entered to win a gift card to local business.

THANK YOU FOR YOUR TIME!

Contact Information: Name



Email/Phone



1. Where do you live?

Mills Other community (Where? _____.)

2. What do you like most about your community?

River

3. What aspects of the Town do you think need improving?

River

4. How can the MPO Staff get you involved in building a vision for the community?

More community events like this one Provide surveys in person or online
 Discuss at Town Meetings
 Other (Note: _____.)

5. On a scale of 1 to 10, how happy are you overall with your community?

1----2----3----4----5----6----7----8----9----10

3

6. On a scale of 1 to 10, how happy are you with transportation and roads in your community?

1----2----3----4----5----6----7----8----9----10

7

7. Which modes of transportation do you use?

Car/Truck Bus Carpool
 Bike Walk

8. How familiar are you with The Bus and available services?

Very familiar I know there is a bus Not familiar
 Somewhat familiar in town, but not the details. I didn't know we had a bus.

9. What, if any, do you feel are the main transportation issues within the community?

?

10. Is there anything that you would like to mention about your community that has not been addressed in this survey?

N/A



Take this survey to help guide the transportation plan and be entered to win a gift card to local business.

THANK YOU FOR YOUR TIME!

Contact Information: Name _____ Email/Phone _____

1. Where do you live?

Mills Other community (Where? _____.)

2. What do you like most about your community?

3. What aspects of the Town do you think need improving?

POURED ROADS IN WINTER - OFTEN WE CAN'T GET OUT OF OUR PLAN

4. How can the MPO Staff get you involved in building a vision for the community?

More community events like this one Provide surveys in person or online
 Discuss at Town Meetings
 Other (Note: _____.)

5. On a scale of 1 to 10, how happy are you overall with your community?

1-----2-----3-----4-----5-----6-----7-----8-----9-----10

6. On a scale of 1 to 10, how happy are you with transportation and roads in your community?

1-----2-----3-----4-----5-----6-----7-----8-----9-----10

7. Which modes of transportation do you use?

Car/Truck Bus Carpool
 Bike Walk

8. How familiar are you with The Bus and available services?

Very familiar I know there is a bus Not familiar
 Somewhat familiar in town, but not the details. I didn't know we had a bus.

9. What, if any, do you feel are the main transportation issues within the community?

MORE PATHS FOR WALKING / BIKING

10. Is there anything that you would like to mention about your community that has not been addressed in this survey?



Take this survey to help guide the transportation plan and be entered to win a gift card to local business.

FOR YOUR TIME!

Contact Information: Name

Phone

1. Where do you live?

Mills Other community (Where? _____.)

2. What do you like most about your community?

Small quiet town

3. What aspects of the Town do you think need improving?

more activities

4. How can the MPO Staff get you involved in building a vision for the community?

More community events like this one Provide surveys in person or online
 Discuss at Town Meetings
 Other (Note: _____.)

5. On a scale of 1 to 10, how happy are you overall with your community?

1---2---3---4---5---6---7---8---9---10

6. On a scale of 1 to 10, how happy are you with transportation and roads in your community?

1---2---3---4---5---6---7---8---9---10

7. Which modes of transportation do you use?

Car/Truck Bus Carpool
 Bike Walk

8. How familiar are you with The Bus and available services?

Very familiar I know there is a bus Not familiar
 Somewhat familiar in town, but not the details. I didn't know we had a bus.

9. What, if any, do you feel are the main transportation issues within the community?

more stops

10. Is there anything that you would like to mention about your community that has not been addressed in this survey?

No



Take this survey to help guide the transportation plan and be entered to win a gift card to local business.

THANK YOU FOR YOUR TIME!

Contact Information: Name _____ mail/Phone _____

1. Where do you live?

Mills ___ Other community (Where? _____.)

2. What do you like most about your community?

Friendly

3. What aspects of the Town do you think need improving?

Sidewalks stop signs

4. How can the MPO Staff get you involved in building a vision for the community?

More community events like this one ___ Provide surveys in person or online
___ Discuss at Town Meetings
___ Other (Note: _____.)

5. On a scale of 1 to 10, how happy are you overall with your community?

1---2---3---4---5---6---7---8---9---10

6. On a scale of 1 to 10, how happy are you with transportation and roads in your community?

1---2---3---4---5---6---7---8---9---10

7. Which modes of transportation do you use?

Car/Truck ___ Bus ___ Carpool
___ Bike ___ Walk

8. How familiar are you with The Bus and available services?

___ Very familiar I know there is a bus ___ Not familiar
___ Somewhat familiar in town, but not the details. ___ I didn't know we had a bus.

9. What, if any, do you feel are the main transportation issues within the community?

N/A

10. Is there anything that you would like to mention about your community that has not been addressed in this survey?

Senior Center
The mills school = used for kiddos!!!



Take this survey to help guide the transportation plan and be entered to win a gift card to local business.

THANK YOU FOR YOUR TIME!

Contact Information: Name [REDACTED] Email/Phone [REDACTED]

1. Where do you live?

Mills Other community (Where? _____.)

2. What do you like most about your community?

Small

3. What aspects of the Town do you think need improving?

Sidewalks + trees (winter damage)

4. How can the MPO Staff get you involved in building a vision for the community?

More community events like this one Provide surveys in person or online
 Discuss at Town Meetings
 Other (Note: _____.)

5. On a scale of 1 to 10, how happy are you overall with your community?

1----2----3----4----5----6----7----8----9----10

6. On a scale of 1 to 10, how happy are you with transportation and roads in your community?

1----2----3----4----5----6----7----8----9----10

7. Which modes of transportation do you use?

Car/Truck Bus Carpool
 Bike Walk

8. How familiar are you with The Bus and available services?

Very familiar I know there is a bus Not familiar
 Somewhat familiar in town, but not the details. I didn't know we had a bus.

9. What, if any, do you feel are the main transportation issues within the community?

None

10. Is there anything that you would like to mention about your community that has not been addressed in this survey?

None



Take this survey to help guide the transportation plan and be entered to win a gift card to local business.

THANK YOU FOR YOUR TIME!

Contact Information: Name _____ Email/Phone _____

1. Where do you live?

Mills ___ Other community (Where? _____.)

2. What do you like most about your community?

Friendly

3. What aspects of the Town do you think need improving?

I don't know

4. How can the MPO Staff get you involved in building a vision for the community?

More community events like this one ___ Provide surveys in person or online
___ Discuss at Town Meetings
___ Other (Note: _____.)

5. On a scale of 1 to 10, how happy are you overall with your community?

1----2----3----4----5----6----7----8----9----10

6. On a scale of 1 to 10, how happy are you with transportation and roads in your community?

1----2----3----4----5----6----7----8----9----10

7. Which modes of transportation do you use?

Car/Truck ___ Bus ___ Carpool
___ Bike ___ Walk

8. How familiar are you with The Bus and available services?

Very familiar ___ I know there is a bus ___ Not familiar
___ Somewhat familiar in town, but not the ___ I didn't know we had
details. a bus.

9. What, if any, do you feel are the main transportation issues within the community?

Earlier BUS

10. Is there anything that you would like to mention about your community that has not been addressed in this survey?

No



Take this survey to help guide the transportation plan and be entered to win a gift card to local business.

THANK YOU FOR YOUR TIME!

Contact Information: Name [REDACTED] Email/Phone [REDACTED]

1. Where do you live?

Mills Other community (Where? _____.)

2. What do you like most about your community?

Small Community

3. What aspects of the Town do you think need improving?

Parks, & Facilities, Sidewalks, Activities for Kids.

4. How can the MPO Staff get you involved in building a vision for the community?

More community events like this one Provide surveys in person or online
 Discuss at Town Meetings
 Other (Note: _____.)

5. On a scale of 1 to 10, how happy are you overall with your community?

1---2---3---4---5---6---7---8---9---10

6. On a scale of 1 to 10, how happy are you with transportation and roads in your community?

1---2---3---4---5---6---7---8---9---10

7. Which modes of transportation do you use?

Car/Truck Bus Carpool
 Bike Walk

8. How familiar are you with The Bus and available services?

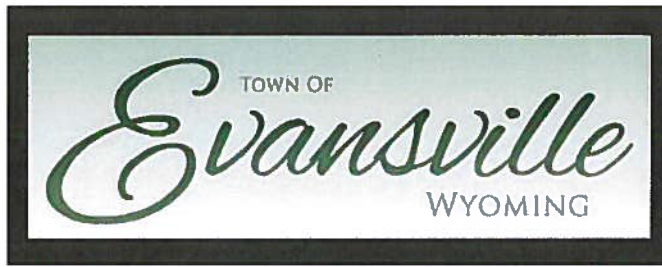
Very familiar I know there is a bus Not familiar
 Somewhat familiar in town, but not the details. I didn't know we had a bus.

9. What, if any, do you feel are the main transportation issues within the community?

Stop Signs,

10. Is there anything that you would like to mention about your community that has not been addressed in this survey?

No ☺



Take this survey to help guide the transportation plan and be entered to win a prize from local businesses.

Contact Information: Name [redacted] Email/Phone [redacted]

1. Where do you live?
___ Evansville ___X Other community (Where? Mills)

2. What do you like most about your community?
speed limits

3. What aspects of the Town do you think need improving?
wider right of way + sidewalks

4. How can the MPO Staff get you involved in building a vision for the community?
X Have more community events like this one
___ Discuss at Town Meetings
___ Provide surveys in person or online
___ Other (Note:)

5. On a scale of 1 to 10, how happy are you overall with your community?
1---2---3---4---5---6---7---8---9---10

6. On a scale of 1 to 10, how happy are you with transportation and roads in your community?
1---2---3---4---5---6---7---8---9---10

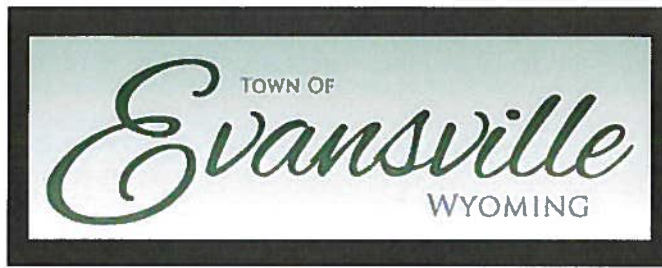
7. Which modes of transportation do you use?
X Car/Truck ___ Bus
___ Bike ___ Walk ___ Carpool

8. How familiar are you with The Bus and available services?
X Very familiar ___ I know there is a bus ___ Not familiar
___ Somewhat familiar in town, but not the details. ___ I didn't know we had a bus.

9. What, if any, do you feel are the main transportation issues within the community?
Bigger bus stop

10. Is there anything that you would like to mention about your community that has not been addressed in this survey?
N/A

THANK YOU FOR YOUR TIME!



Take this survey to help guide the transportation plan and be entered to win a prize from local businesses.

Contact Information: Name [redacted] Email/Phone [redacted]

1. Where do you live?
 Evansville Other community (Where? mills.)

2. What do you like most about your community?
Every Thing

3. What aspects of the Town do you think need improving?
Stree's

4. How can the MPO Staff get you involved in building a vision for the community?
 Have more community events like this one Discuss at Town Meetings
 Provide surveys in person or online
 Other (Note: _____.)

5. On a scale of 1 to 10, how happy are you overall with your community?
1-----2-----3-----4-----5-----6-----7-----8-----9-----10

6. On a scale of 1 to 10, how happy are you with transportation and roads in your community?
1-----2-----3-----4-----5-----6-----7-----8-----9-----10

7. Which modes of transportation do you use?
 Car/Truck Bus Carpool
 Bike Walk

8. How familiar are you with The Bus and available services?
 Very familiar I know there is a bus in town, but not the details. Not familiar
 Somewhat familiar I didn't know we had a bus.

9. What, if any, do you feel are the main transportation issues within the community?
We need big bus And more bus stop for ppl that not have a car

10. Is there anything that you would like to mention about your community that has not been addressed in this survey?
Just more bus stop.

THANK YOU FOR YOUR TIME!

This report is filtered

Only show: Question "Where do you live?" is one of the following answers ("Mills")

Report for MPO Plan Surveys

1. Response Counts

Completion Rate:

100%



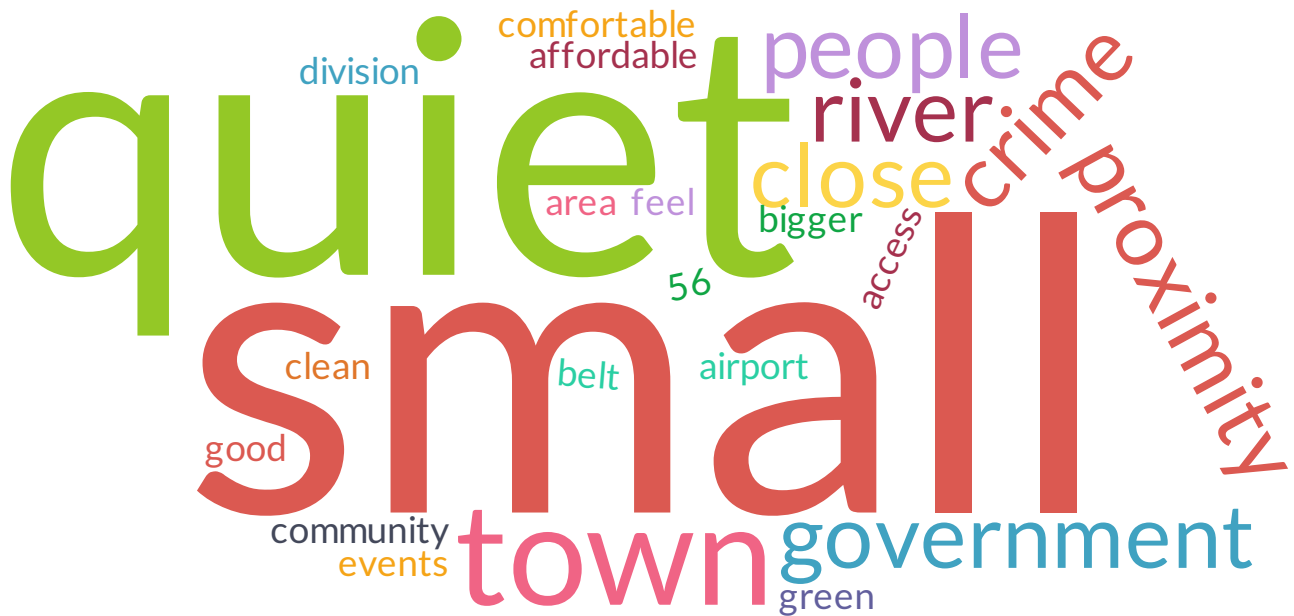
Complete



38

Total 38

2. What do you like most about your community?



| Count | Response |
|-------|---|
| 3 | Small |
| 2 | Friendly |
| 1 | Affordable housing, taxes, etc. Proximity to Belt Loop and Airport. |

| Count | Response |
|-------|--|
| 1 | Everyone knows me |
| 1 | Everything |
| 1 | Friendly people |
| 1 | I've been here over 56 years, like the room |
| 1 | Its comfortable |
| 1 | Its getting bigger and better |
| 1 | Its quiet |
| 1 | Less government |
| 1 | Low crime |
| 1 | My area is quiet |
| 1 | New Division, friendly |
| 1 | Place is very clean and quiet |
| 1 | Plowed roads in the winter often and we can't get out of our plan |
| 1 | Proximity to things, close to work |
| 1 | Quiet |
| 1 | River |
| 1 | Small and quiet |
| 1 | Small community |
| 1 | Small quiet town |
| 1 | Small town with little crime |
| 1 | Smaller with good access to town government, relaxed, green spaces |
| 1 | The small feel |
| 1 | Wildlife |
| 1 | how close the schools are to my home and the river |
| 1 | it is quiet |
| 1 | love all the events, always something to do, the libraries |

| Count | Response |
|-------|------------------------------------|
| 1 | people |
| 1 | snow removed on streets in mt view |
| 1 | speed limits |

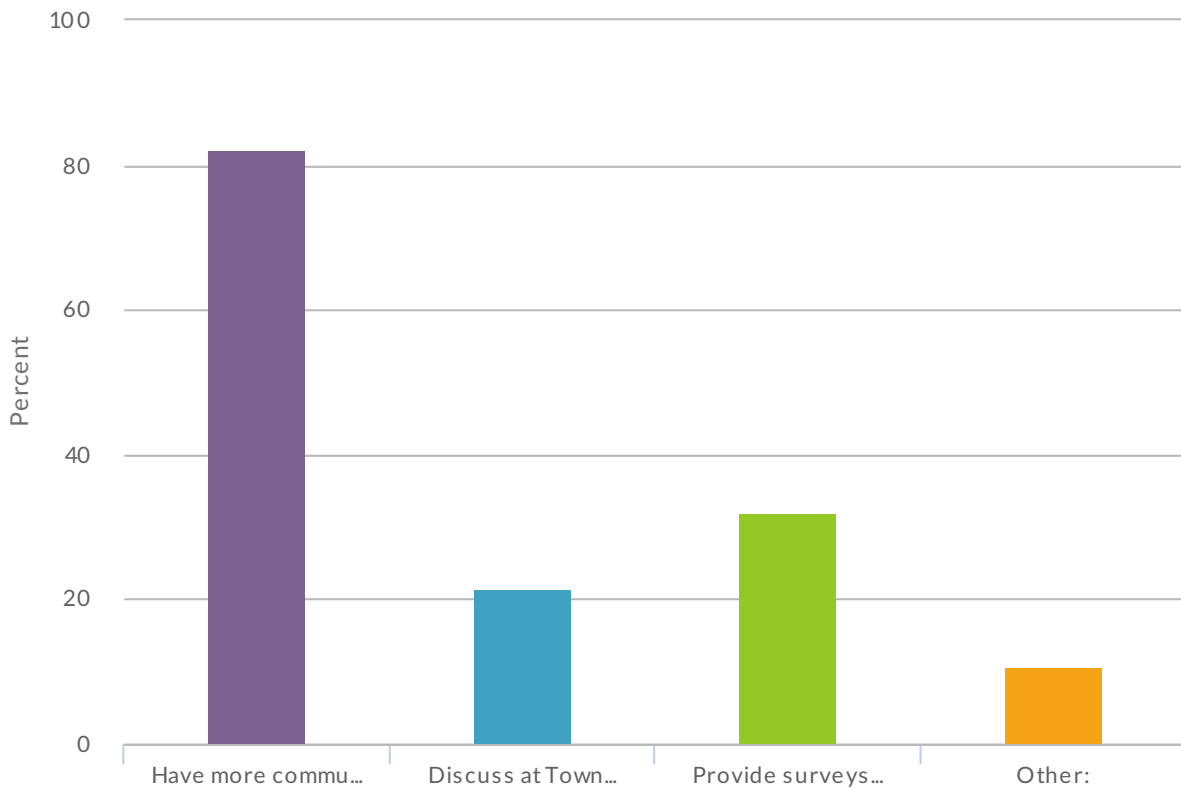
3. What aspects of the Town do you think need improving?



| Count | Response |
|-------|--|
| 2 | the roads |
| 1 | Businesses and more family activities |
| 1 | Cleaning up properties |
| 1 | Dumping of trash on land |
| 1 | Food business |
| 1 | Get rid of cats running all over, if you make laws enforce them |
| 1 | Keep streets up better, use taxes better |
| 1 | More activities |
| 1 | More activities for children/maybe a youth center, more adult books in library |
| 1 | More activities, restaurants |

| Count | Response |
|-------|---|
| 1 | More entertainment |
| 1 | More shopping centers and restaurants |
| 1 | More stuff for kids, activities |
| 1 | Mufflers, mandatory city ordinance |
| 1 | Parks, facilities, sidewalks, activities for kids |
| 1 | River |
| 1 | Roads |
| 1 | See more accountability for upkeep of personal property, too many ill-cared for and neglected yards and dwellings |
| 1 | Senior housing, grocery store |
| 1 | Sidewalks and stop signs |
| 1 | Sidewalks and trees (winter damage) |
| 1 | Snow removal |
| 1 | Splash pad at River Park |
| 1 | Streets |
| 1 | We need more and diversified commercial opportunities: grocery, family restaurants, recreation. Walking paths and parks!! |
| 1 | We need more for family's, water park, baseball park |
| 1 | Wider right-of-way and sidewalk |
| 1 | a bigger library, safer cross streets in neighborhoods |
| 1 | still live, not change in the river construction |

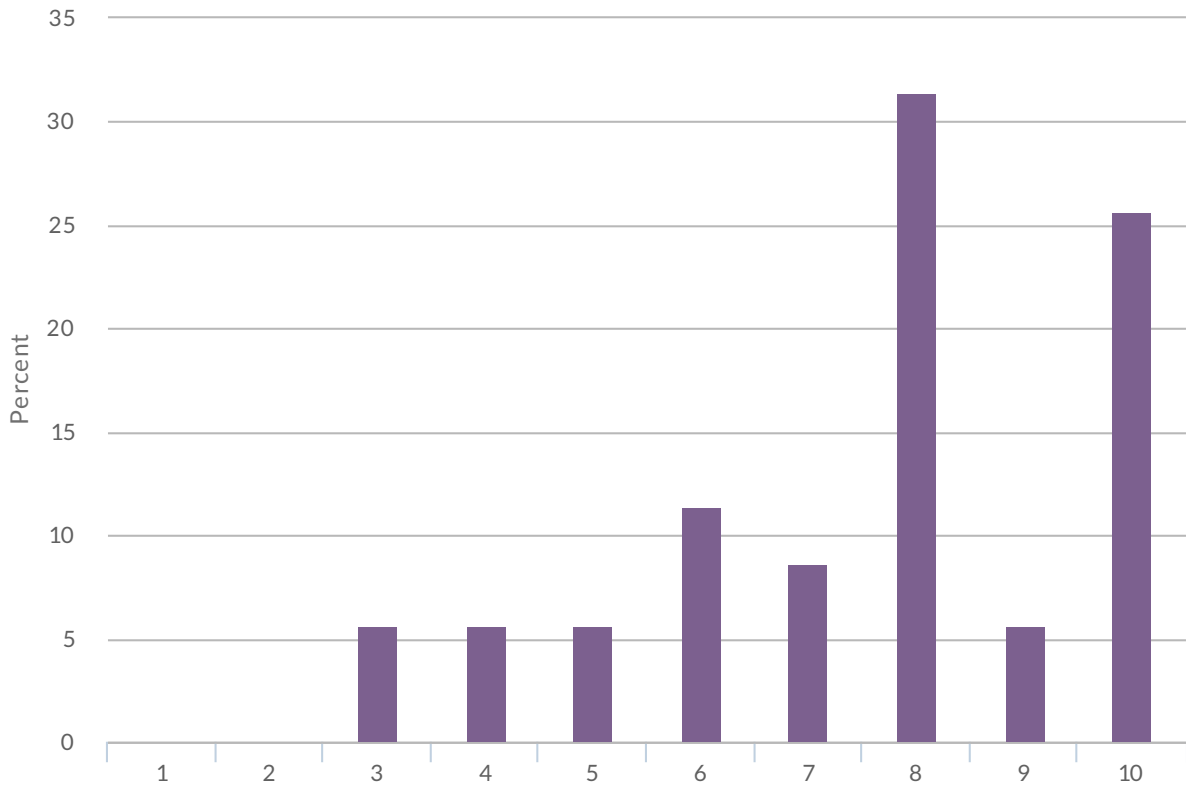
4. How can the MPO Staff get you involved in building a vision for the community?



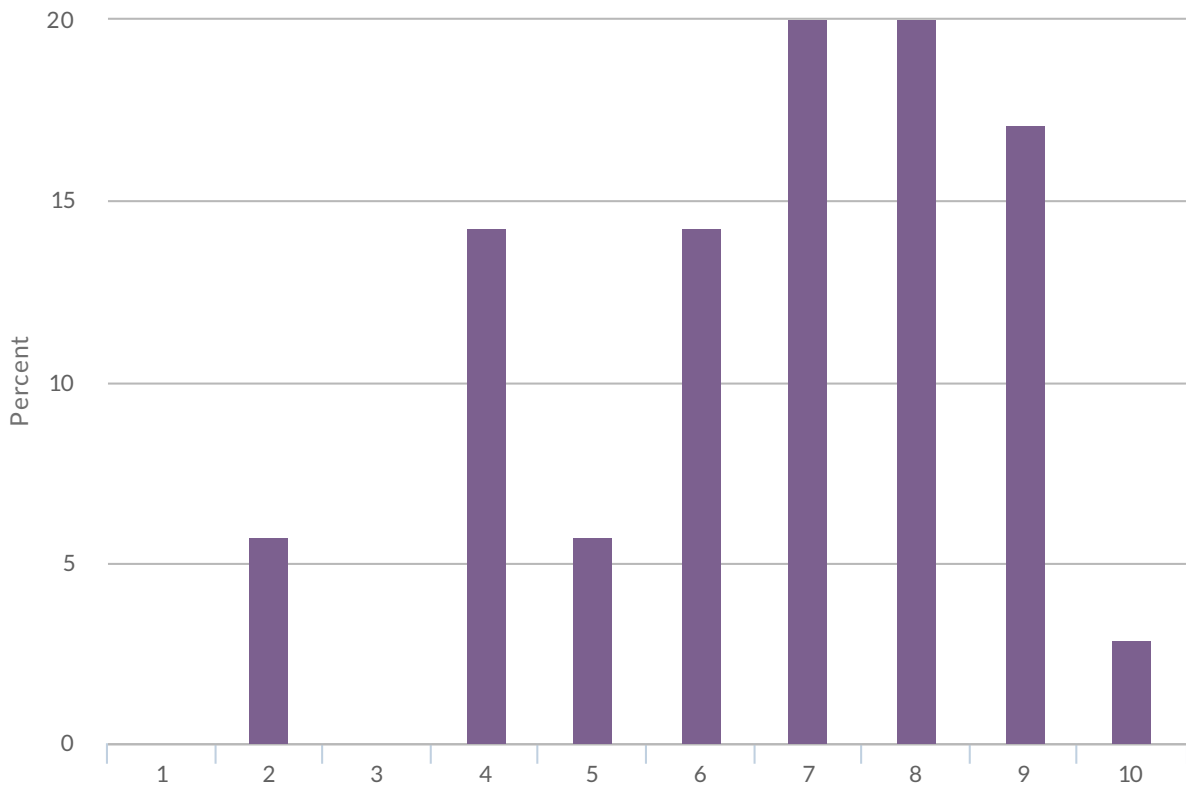
| Value | Percent | Count |
|--|---------|-------|
| Have more community events like this one | 82.1% | 23 |
| Discuss at Town Meetings | 21.4% | 6 |
| Provide surveys in person or online | 32.1% | 9 |
| Other: | 10.7% | 3 |

| Other: | Count |
|---|----------|
| Free food events | 1 |
| help out with people who have no way to take things to the landfill | 1 |
| listen when told | 1 |
| Total | 3 |

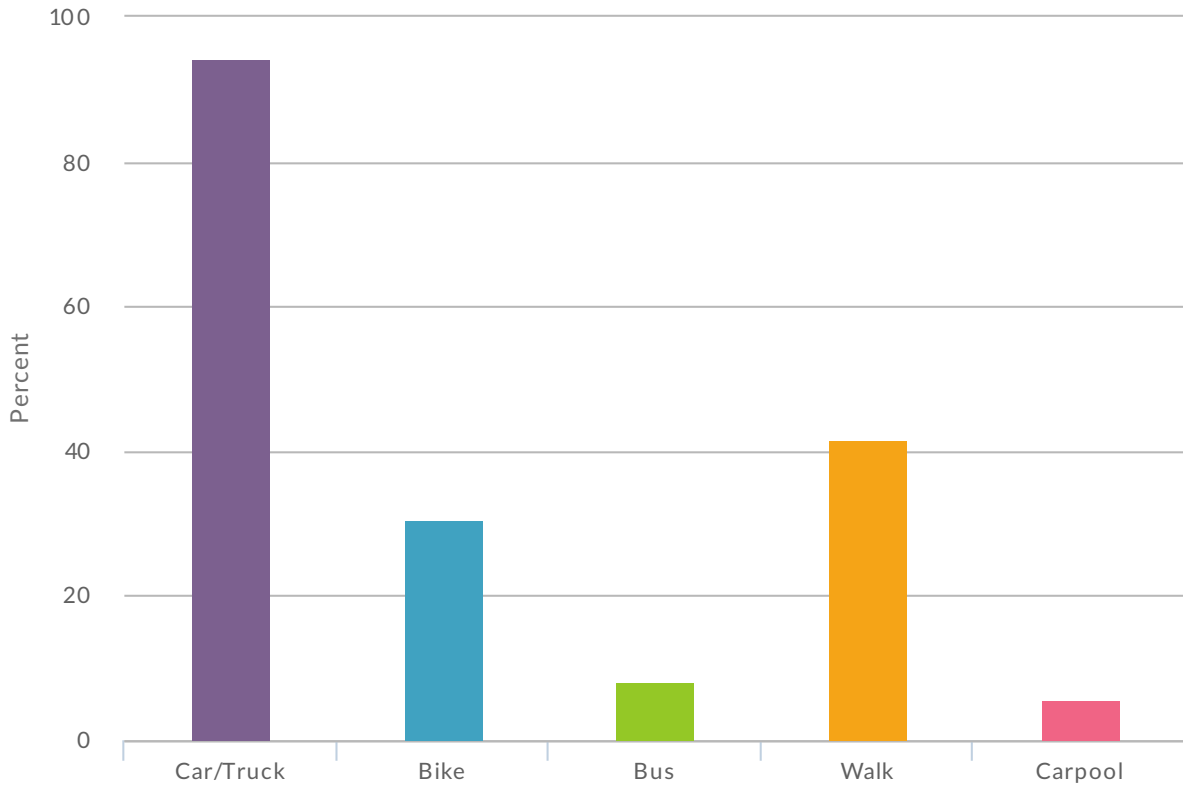
5. On a scale of 1 to 10, how happy are you overall with your community?



6. On a scale of 1 to 10, how happy are you with transportation and roads in your community?



7. Which modes of transportation do you use?



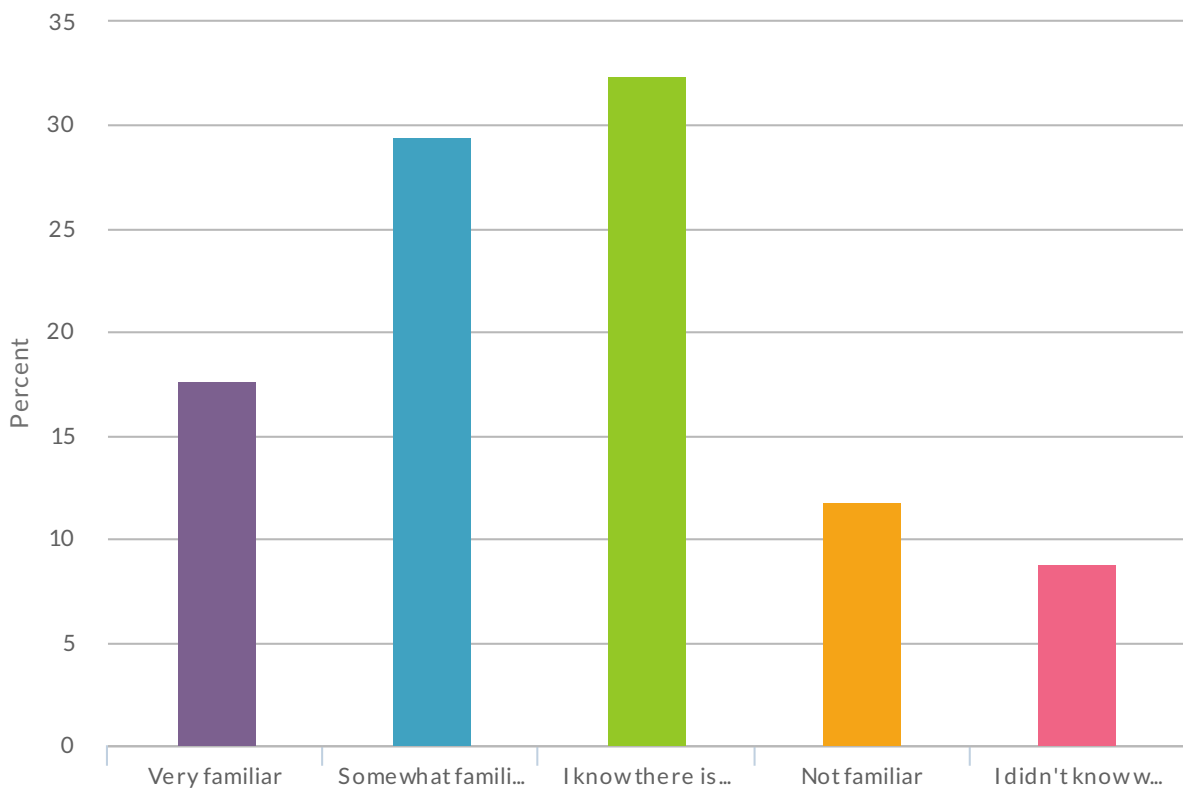
| Value | Percent | Count |
|-----------|---------|-------|
| Car/Truck | 94.4% | 34 |
| Bike | 30.6% | 11 |
| Bus | 8.3% | 3 |
| Walk | 41.7% | 15 |
| Carpool | 5.6% | 2 |

8. How likely would you be to utilize bus services if made available within Bar Nunn?

Percent

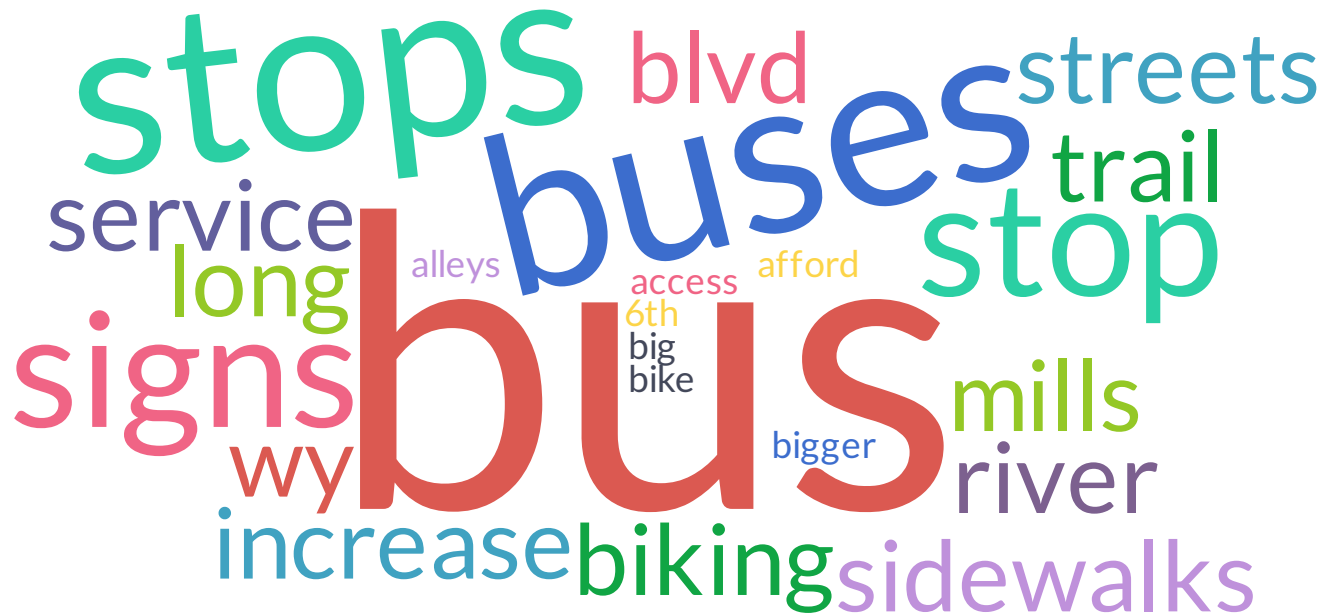
No data to display

9. Evansville/Mills: How familiar are you with The Bus and available services?



| Value | Percent | Count |
|--|---------|-------|
| Very familiar | 17.6% | 6 |
| Somewhat familiar | 29.4% | 10 |
| I know there is a bus in town, but not the details | 32.4% | 11 |
| Not familiar | 11.8% | 4 |
| I didn't know we had a bus | 8.8% | 3 |

10. What, if any, do you feel are the main transportation issues within the community?



| Count | Response |
|-------|--|
| 1 | Best route isn't the fastest get to Walmart. Bus takes too long |
| 1 | Bigger bus stop |
| 1 | Buses don't go where they need to, no saturday or sunday service. |
| 1 | Don't need bus |
| 1 | Hard to afford on income disability |
| 1 | Just the proper signs at cross streets |
| 1 | Live at poisonwood, need a park |
| 1 | More buses and stops on weekends |
| 1 | More paths for walking and biking |
| 1 | Need public transportation in evening and weekends |
| 1 | Need to increase service and bus stops. |
| 1 | Not enough sidewalks, they need some repair |
| 1 | O trail extended, connective to post office, no sidewalks. |
| 1 | Stop signs |
| 1 | Too many stoplights |
| 1 | WY Blvd and fix alleys, all dirt, need paved. More stop signs on side streets (6th and river view) |
| 1 | We need big buses and more bus stops for people that don't have a car |
| 1 | Winter roads |
| 1 | bus routes/rides are long. Mills need to run on saturdays and sundays |
| 1 | earlier bus |
| 1 | more stops |
| 1 | need more buses and drivers for buses |
| 1 | safe biking and walking access to river trail system, need bike trail. Along WYO Blvd to Mills and through Mills |
| 1 | slow-increase speeds, crossing of SW WY |

11. Is there anything that you would like to mention about your community that has not been addressed in this survey?



| Count | Response |
|-------|--|
| 1 | Closing mills elementary, new schools |
| 1 | Housing along river, close to hospital. First repaint crosswalks, school crosswalks. |
| 1 | Improve website, post events like this |
| 1 | Just excited at the opportunity to spur diverse growth for the community |
| 1 | Just more bus stops |
| 1 | Mail delivery |
| 1 | Parks do not have special needs equipment |
| 1 | Petting, amusement park |
| 1 | Recycle depot close |
| 1 | River parties |
| 1 | Senior center. The middle school used for kiddos |
| 1 | nice restaurants, grow a little, more shopping |
| 1 | the water pressure could be better |